

Hill-Murray

Hill-Murray School Alumni Magazine **FALL 2016**

Today

PIONEERS

Stadium Grand Opening
Homecoming September 16, 2016

2015-2016 ANNUAL REPORT ISSUE





The 2016 Distinguished Alumni gathered on the Commons patio before they were honored on April 18th.

To view their speeches, visit www.hill-murray.org and click on Alumni

Meet the DISTINGUISHED ALUMNI



Dr. Kevin Connors, '81

*Ron Ryan, Jr.
Community Service Award*

This award was given to Kevin for his commitment to live and work with the purpose of displaying Christian values.



John Hughes, '82

*Hill-Murray
Heritage Award*

This former National Press Club President founded the Friends of the Soldiers Home in Washington, D.C.



Patricia Soutor

*Benedictine
Award*

Honored for her years of service and dedication to the Hill-Murray community, Pat worked for four athletic directors during her time here.



Dr. Craig Svendsen, '71

*Hill High School
Heritage Award*

After a long and dedicated career as a physician, Craig continues to volunteer his services in retirement.



Candyce Murray-Ihnot, '67

*AMMHS Heritage
Award*

Candyce was honored for a 40-year career in education, dedicated to helping children learn to read.



Brian Mogren, '85

*Fr. Greg Tolaas
Distinguished
Service Award*

Brian's award reflects his dedication to restorative justice and ending violence through healing and reconciliation.



Patrick Schafhauser, '89

Lasallian Award

Pat was honored as a role model for our student athletes and for his foundation for severely injured athletes.

Letter from the PRESIDENT |

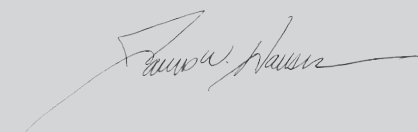
Dear Community Members:

Over the past 18 months a group representing the Board of Trustees, Faculty, Administration and Alumni met to update the schools belief systems (Vision, Mission and Values) and to develop a set of goal statements with measurable performance indicators to be achieved by the year 2021.

The plan calls for increased personalized learning options, and more flexibility in our offerings, both of which reflect changes in the development of the skills necessary in the 21st century. The goal is to put the average Hill-Murray student in the top 15% of all graduates in the country with the assurance of learning programs to support that goal. We will host listening sessions for alumni and parents this fall on the plan and its specific strategies. A summary of the belief systems and goals are described on page 7.

What has not changed in the new plan is that this is a community where students are inspired to live their faith and nurture their unique talents; a place where our cocurricular offerings allow students to develop the emotional intelligence and resilience to be successful when met with adversity; and where faculty and staff prepare and inspire students to go out and make significant contributions to the world.

We anticipate our third consecutive year of enrollment growth, along with the opening of the *Mary Queen of Victory Stadium*, a \$3.6 million dollar investment by the community. I hope you will join our growing student body and outstanding faculty in blessing the new stadium and come participate in a week of events and games to celebrate Homecoming.



James Hansen, '73 | President, Hill-Murray School





Letter from the VICE PRESIDENT



2015-2016 was a record setting year for contributions to Hill-Murray School. Because of donors like you we will open the new *Mary Queen of Victory Stadium* in September. We also had a record-breaking auction which included \$455,000 in contributions to the Friends of Hill-Murray Tuition Assistance Fund and more than \$250,000 in cash was added to the school endowment. Overall, nearly \$7,000,000 was donated or committed to the school this year! I am confident you will find your generous donations are being put to good use:

Donations raised from the auction and a portion of our annual fund are used to help provide access to Hill-Murray for families who otherwise might not be able to make it work. Our enrollment grew by nearly 8% last year. This increase in enrollment empowers the administration to offer variety in the classroom, including three additional College In the School offerings from the University of Minnesota, which brings our total offerings to eleven. Students may now graduate from Hill-Murray with nearly 30+ college credits. Tuition support = additional students = more offerings = a better experience for all students.

We have many of you to thank for helping us achieve our goal of building a new stadium on campus. Special thanks go to the leadership team, who helped the school launch the campaign and includes Patrick Tinucci, Michael Sonntag, Dr. Sue Paul, Steve Hauser, Tom Betti, Ken Powell, Molly Lawrence Schaffer and Tim Yocum. On September 16th, we will open the field with renewed energy around all our outdoor sports. Pete Bercich joins Hill-Murray after spending years with the Minnesota Vikings as a player, coach and analyst. We are also excited to welcome Jeff Zupfer as our boy's soccer coach. The field has helped us attract both coaches and students to the school. I speak for the Hill-Murray students and Tim Ryan when I say thank you for making this all possible.

Finally, we want to thank the many donors who recognized us in their wills and estate plans. This year we committed more than \$1,065,000 to our endowment. These contributions are the future of Hill-Murray and Catholic Education on the East Side.

Hill-Murray is a special school which has developed student leaders for more than 50 years. I am proud to be a part of this community and am continually humbled by the incredible investments you, our donors, make in the school. Thank you for making Hill-Murray a great place for students!

Chris Zupfer | Vice President, Hill-Murray School

Don and Jean Regan, founders of Premier Banks, purchased the naming rights to the new stadium. In keeping with their Catholic faith, they have named the stadium in honor of a prayer recited by our Pioneer athletes before their competitions- *"Mary Queen of Victory, pray for us."*



Pete with former NFL
standout, Jerome Bettis

Meet PETE BERCICH

Director of Development & Head Football Coach

Growing up in Joliet, Illinois, Pete Bercich attended a high school very similar to Hill-Murray. "It was a Catholic institution, the school colors are the same, and we had a legendary high school coach and athletic director like Bill Lechner," Bercich explains. "That's why I'm here. I had a great experience, and I want to give that experience to the young men and women here. I don't think I could do this at a public school."

When Bercich was a freshman in high school, football wasn't his primary focus. "Baseball was my favorite thing. It wasn't until my junior year that I realized I was more fit to play football. In baseball, you can play harder, but it doesn't mean you'll play better. There's a different mentality."

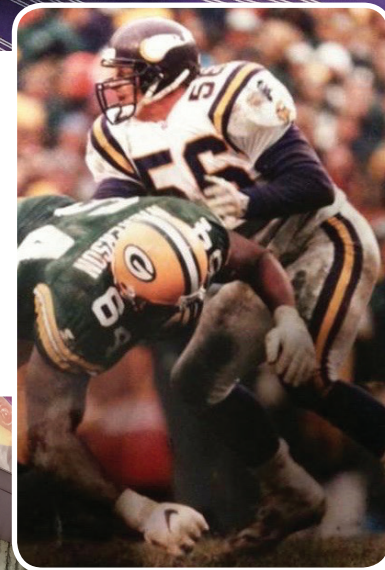
After high school, Bercich went on to play football at the University of Notre Dame under legendary coach Lou Holtz. He graduated with a degree in Finance and lettered all four years. "I can't remember our record, but we were good," Bercich laughs. In May of 1994, Bercich was drafted by the Minnesota Vikings in the 7th round, and 211th pick overall. He played for the Vikings for seven seasons. In 1998, the team had a 15-1 record, losing in the championship game to Atlanta. While this was Bercich's most memorable season, he says he misses his teammates the most. "We were all different people, but everyone was there for the same reason. You'll never trust anyone the way you trust your teammates."

In 2002, Bercich took a job as the defensive quality control coach for the Vikings. From 2003 to 2005, he was the team's linebacker coach. But as his kids have grown up, Bercich has taken on a different role helping coach his sons' youth football teams. "It's a bit of a jump," Bercich laughs. "But it's a key experience to have as a coach. It's all about simplifying the game and identifying what's really important."

While most know Bercich as our new head football coach, he's also taking on another role as Director of Development. "I'm here to help build a legacy in the form of endowment and maintain the financial health of the institution. It's fun. As a football coach, goals are usually week-by-week. As Director of Development, the vision is long-term."

When asked what he loves about Hill-Murray, Bercich didn't hesitate. "The people. They make Hill-Murray what it is. I'm completely impressed by everybody here and everyone who has gone through school here and is still a part of the community. I want to be here for a long time and work with these people for a long time."

With three kids running to and from sports in the Bercich household, spare time is hard to come by for he and his wife, Amy. Affectionately referred to as 'repeat,' Pete is the oldest of the bunch and will be 17 in August. Abbi is 14, and Ryan is the youngest at 12. "When we do have time, fishing is what we do. It's our thing. Whenever we can, as often as we can."





Letter from the

BOARD OF TRUSTEES CHAIRMAN



We have much to celebrate at Hill-Murray School. The community welcomed Jim Hansen, a '73 graduate as our President. We had many student success stories from the classroom to our sports and arts. The school enrollment grew nearly 8% and our donation revenue increased by more than 17%. Hill-Murray is certainly headed in a positive direction. Now is the ideal time for us to take full advantage of our momentum and deliver a comprehensive vision for our future.

In June of 2016, the Board of Trustees approved a new strategic plan for Hill-Murray School. A group of Hill-Murray community members, led by Board of Trustee member Dan Rice, spent 16 months preparing a clear vision and path for the next five years at Hill-Murray. I am excited to introduce our new Mission and Vision statements to you now and look forward to releasing the full strategic plan in the coming months.

I hope you will agree that our mission statement reflects the incredible work being done at Hill-Murray to develop students. "A learning community committed to academic distinction" is demonstrated in the performance of our senior class which received more than \$6 million in scholarships for college. "Fosters the growth and celebrates the talents of each individual" is shown through the 96% of students who participate in cocurricular programming. "Prepare students to be ethical servant leaders" is demonstrated through the more than 7,000 volunteer hours logged by our student body in 2015-2016. It is the intention of the Board of Trustees and the staff of the school to strive to show significant growth in each of these areas over the next five years.

The Board of Trustees would like to thank all of our donors. Your generous support ensures that the staff has the necessary resources to deliver on our mission.

Sincerely,

Dan Hackman | Board of Trustees Chairman, Hill-Murray School

STRATEGIC PLAN 2016-17



MISSION STATEMENT: Hill-Murray is a Catholic Benedictine learning community that commits to academic distinction, fosters the growth and celebrates the talents of each individual, and prepares all students to be ethical servant leaders for our world.

VISION STATEMENT: The vision of Hill-Murray is to be a thriving and dynamic community, recognized for delivering an innovative and personalized learning experience, that inspires all of us to live our faith, honor our traditions, use our talents to serve, and make significant contributions to our world.

AT HILL-MURRAY WE VALUE:

LOVE OF LEARNING:

We provide a rigorous and innovative academic experience, acknowledging the needs and aspirations of each student, with the goal of nurturing a lifetime love of learning.

REFLECTION AND DEVELOPMENT OF THE WHOLE PERSON:

We foster Benedictine values of service, spirituality and prayer, humility, hospitality, self-awareness, dialogue, and stewardship to enable our students to live and embrace their faith.

INCLUSIVITY:

We welcome to our community all cultures, faiths, and economic backgrounds, and embrace those with unique learning talents and challenges.

SERVICE AND CHARACTER:

We cultivate character and leadership by calling students to serve others and to participate in religious, community, and school activities.

COMMUNITY:

We celebrate the lifelong commitment to sharing faith and values with our students, alumni, parents, staff, and friends of Hill-Murray.



LASALLIAN SCHOLARSHIP WINNERS

Established in 2015 by a generous benefactor of Hill-Murray, The Lasallian Teaching Endowment is rooted in the commitments made by The Christian Brothers in their pursuit of educational excellence. Teachers, coaches, co-curricular leadership, club moderators, and administrators are encouraged to seek grants and other financial support to enhance their skills with the intention of positively transforming the student experience at Hill-Murray School.



Denise Bates

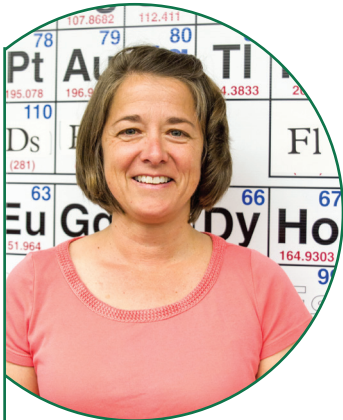
Director of Enrollment

With a vision to empower young women, Denise plans to establish a mentoring program in which Hill-Murray girls will act as “big sisters” to students in need from Catholic elementary schools.

“All my life, I have been fortunate to have strong, creative, successful, brave women as mentors. I want to ensure that young girls have positive role models in their lives as well.”

Students will have the opportunity to work in small groups or one-on-one with the girls. After completing some training, Hill-Murray “big sisters” will serve as friends, tutors, and mentors. Every relationship will be uniquely tailored to the needs of each girl, but Denise also envisions social activities in larger group settings: service projects, movie nights, attending Hill-Murray theater productions, and sporting events.

“Hill-Murray students will be able to see how they can make a difference in the lives of young people and positively impact neighboring communities.”



Michelle Lee

Science Teacher

In September of 2015, Michelle Lee and her husband donated a 20-gallon aquaponics tank and light kit to the school. Aquaponics is a system of aquaculture in which the waste produced by farmed fish or other aquatic animals, supplies nutrients for plants grown hydroponically, which in turn, purify the water.

“Academically, aquaponics is the ultimate manifestation of the nitrogen cycle in a closed ecosystem. Globally, aquaponics is the pinnacle of sustainable agriculture for populations where water and/or nutrient-rich soil are limited.”

Michelle is initially planning to integrate this project into the existing chemistry and biology curriculum, but the sky is the limit. Michelle is also aspiring to introduce a standalone scientific methods STEM course, or provide a working herb and vegetable farm for use in the school cafeteria.

On a larger scale, Michelle hopes to integrate the concept of sustainable agriculture into biology, chemistry, economics, and history. “It’s not that far of a jump to assume that other courses might already have pieces in place for this more complex integration of curriculum to take place.”



Ben Gapinski

Math Teacher

Ben Gapinski’s dream for Hill-Murray is to have a classroom powered by solar energy. He wants to make Hill-Murray a leader in moving toward cleaner energy sources. Not only would investing in solar energy be financially beneficial, but students would also benefit by helping to design, install, and monitor the solar array using engineering, construction, and programming skills.

Additionally, this project gives students an opportunity to undertake a project of real significance and follow it through, from start to finish. Students involved in the implementation of solar energy will improve their skills in research, computer-aided design, organization, use of construction tools, website design, and computer programming.

ADAM GOTT SCHOLARSHIP
Vincent Illgen
Eva Potvin

AMBER C. GODFREY MEMORIAL SCHOLARSHIP
Maria Medini

ANCIENT ORDER OF HIBERNIANS SCHOLARSHIP
Ryan Noseworthy

DENIS TRI & TRICIA GOKEN MEMORIAL SCHOLARSHIP
Molly Prior

DOLORES RIGALI BARRETT SCHOLARSHIP
Theodore Gabrielli
Anthony Hurley

DR. SUSAN PAUL EDUCATION FUND
Joseph Schoenecker

DUFRESNE FAMILY SCHOLARSHIP
Isabella Gabriel
Natalia Reese

ELEANOR BECKLEY SCHOLARSHIP
Victoria Metry
Chris Nelson
Morgan Pietruszewski
William Sutherland

EUGENE AND LUCILLE SCHILTGEN MEMORIAL SCHOLARSHIP FUND
Claire Matuga

FLAHERTY FAMILY FOUNDATION SCHOLARSHIP

Corrine Brown
Sabrina Johnson
Brock Mitchell
Bomi Omoyeni
Morgan Pietruszewski
Matthew Ray
Garvy Teagum
Gretchen Tran
Annika Whittington

FRANK & MARGARET ASENBRENNER EDUCATION FUND

James Gunderson
Madison Renberg
Delilah Schuster
Nicholas Johnson
Robert Muniz
Hannah Muntifering

HILL-MURRAY ALUMNI SCHOLARSHIP FUND

Randy Bacchus
Collin Connors
Morgan Giese
Zachary Giese
Lucas Gross
Mitchel Gutknecht
Matthew Harrington
Savanah L’Allier
Danny Petronack
Tyler Schmelz
Lucas Smith
Lauren Venzke
Joseph Wallrich
George Woessner
Amelia Wren
Jenna Schwartz

HILL-MURRAY DIVERSITY SCHOLARSHIP

Maya Aflakpi
Alexander Flint
Taylor Hara
Jay Lee

HILL-MURRAY MOTHERS CLUB SCHOLARSHIP

Marcus Anderson
Jordon Carney
Brady Chuhel
Sophia Daley
Charlie Dostal
Sonni Eib
Samantha Gallagher
David Gallagher
Kathryn Garhofer
Samuel Henkes
Ella Hulsey
Kali Johnson
Kasanna Klaas
Kaitlin Koran
Joel LaChappelle
Jack Matuga
Cody Peterson
Elizabeth Roeske
Emily Schabert

JOHNSON FAMILY SCHOLARSHIP
Kiley Knutson
Anthony Moore

MARK ANDREW WESTERHAUS
Lauren Hinrichs

MARY JO RUEB SCHOLARSHIP
Bailey Byrnes
Elizabeth Frederikson
Katherine Hull
Claudia Lenz
Madeleine Servais

MAUREEN TWOHY GUNDERSON FUND
Nathanael Wolffe

PIONEER PARTNERS FUND SCHOLARSHIP
Lucas Bechtold
Amelia Jutz
Christine Lorentzen
Kyle McFadden
Katherine Schindler
Tanner Behr

RADFORD-LAWRENCE SCHOLARSHIP
Lance Meniboon

REGAN FAMILY SCHOLARSHIP
Anthony Bobrowski
Madelyn Connors
Jack Matuga
Maria Wolfe
Charlie Dostal
Lauren Venzke
Callie Kosmalski
Grace McElmury
Zachary Zarembinski

RON RYAN MEMORIAL FUND
Peter Hommes

SAM BUELL CREATIVE ARTS FUND
Elizabeth Ott

SCHULZE SCHOLAR AWARD
Alex Belde
Hannah Harwell
Isaac Heyabe
Drew Klemann
Isabella LaCasse
Maria Mariani
Isabella Mariani

David Mordini
Madeline Sheahan
Carla Sykes

SCOTT E. CARLSON SCHOLARSHIP FUND
Tiffany Tran

SCOTT RICHARDS MEMORIAL SCHOLARSHIP FUND
Christopher Moore

SISTERS OF ST. PAUL’S MONASTERY
Lindsey Featherstone

TOLAAS MEMORIAL SCHOLARSHIP
Wilhelm Bosch
Morgan Johnson
Jack Kriegl
Mae Lindemer

TYLER BERQUAL MEMORIAL SCHOLARSHIP
Ava Krize
Ryan McFadden
Sophia Schroepfer
Jack Napol

WILLIAM SCHRAM MEMORIAL SCHOLARSHIP FUND
Alex Bloemendal
Emily Herzog
Aaron Johnson
Nathan Kaufman
Colin Knack
Shannon Leahy
Megan Matara
Jack Morrison
Madelynn Rausch
Grace Sutton





LEGACY GIFTS

As the Benedictine Sisters and Lasallian Brothers laid the foundation for the future of Hill-Murray School, you can help lay the foundation for future Pioneers by including the school in your estate plans. When reviewing your Will with a lawyer or financial planner, please consider making a designation to support the financial future of Hill-Murray School.

If you are interested in learning more about planned giving, and exploring what giving option best fits your needs, please contact Chris Zupfer at czupfer@hill-murray.org.



“Not only did I get a great education at Hill High School, I made many great and lasting friendships. I am committed to keeping Hill-Murray open for my grandchildren and great-grandchildren. Not only did I sign on for the Legacy Society upon my death, but I am currently donating a living legacy in honor of the class of ’64 through an annual check of untaxed dollars to Hill-Murray from my IRA.”

— *Frank Wald,
Hill High School class of 1964*



“Our two daughters received a high-quality, Christian-based education at Hill-Murray which laid the foundation for the productive, faith-filled, happy lives which they now enjoy. We hope our gift will help give other young women and men the same opportunities.”

— *Jim & Char Kouri,
Past Parents*



LEGACY

Upcoming Planning Session

Please join us to learn more about strategies for creating your legacy. Learn how to utilize estate planning to provide for your family and beloved charitable organizations by attending one of our upcoming planning sessions.

To attend any of the sessions, please RSVP to Judy Hajlo Schwartz at jschwartz@hill-murray.org or 651-748-2445.

**Tuesday,
October 4th**
10:30am — 12:00pm
brunch included

Legacy Society

- | | | |
|---------------------------------|----------------------------------|--------------------------------|
| Peggy Leko Colombo ‘64 | Greg Jacobs, ‘64 | Kathleen Buzicky Saladino, ‘64 |
| Sara Edel, ‘79 and Dee Reinking | Char and Jim Kouri | Frank R. Wald, ‘64 |
| Richard Ginnaty, ‘64 | Bob and Linda Lawrence ‘63 & ‘65 | James & Rochelle Westerhaus |
| James Hansen, ‘73 | Michael, ‘64 and Delores Rowan | Jim and Mary Wold, ‘64 & ‘73 |

*If you have already named Hill-Murray in your estate, please let us know so we can include you as a member of our Legacy Society.
Contact Chris Zupfer at czupfer@hill-murray.org.*

In Memorium

“Blessed are those who mourn, for they shall be comforted” —Matthew 5:4

We invite you to join us in prayer for deceased alumni, staff, parents and grandparents. Please visit www.hill-murray.org/memorium to view the list.



Service SPOTLIGHT

Sister Linda Soler, Campus Ministry

There are two service requirements each year for students in grades 9-12. At Hill-Murray, nearly 200 students go above and beyond these requirements every year and are presented with an award for their dedication to serving others.



While most might recognize Sister Linda from the sidelines of the football field on Friday nights, inside Hill-Murray she takes on a different role: student service coordinator. “Service is a way for us to make our sign in the front of the building come alive,” Sister explains. The sign on Sister is referring to greets visitors and reads, ‘All guests welcomed as Christ.’

“At Hill-Murray, the service requirement isn’t about the hours as much as it is about who you are and how you’re living out your life as a Christian.” Hill-Murray students are called to fulfill two service experiences each year, one of those serving the poor and vulnerable in the community. “It’s a challenge,” Sister says, “There’s always so much more you want to do. Service goes back to what we as Christians are called to-do: build a kingdom of God.”

This past year, Hill-Murray students and staff lived out that mission on trips to Hazard, Kentucky and White Earth Indian Reservation near Mahanomen, Minnesota. “This was the first year that Hill-Murray had mission trips for all grades. It was awesome! Although it was at different locations, the goal was the same. Bring Hill-Murray to the people.”

“The focus within the school is ‘how can we help another person?’ Sometimes you’re receiving, other times you’re doing the giving. Hill-Murray has always been there for those in need.”



GOLD

SENIORS

Amanda Andert
Madison Bestler
John Boosalis
Jordan Buron
Jack Butler
Randall Clintsman
Paris DeLisle
Nathan Donatell
Kyla Donovan
Joy Dunna
Anne Franey
Kathleen Johnson
Haley LaVelle
Andrea Laudi
David Moe
Chris Moore
Matt Munkelwitz
Caitlin Noseworthy
Jordan Peterson
Benjamin Pults
Luke Ranallo
Andrew Rosemark
John Scanlon
Samantha Schneider
Emma Sloom
Eleanor Schwartz
Catherine Still
Mary Tollefson
Kevin Vander Hayden
Nicholas Weimann
Christian Williams
Angela Yarusso

JUNIORS

Michelle Abbott
Sydney Ball
Margaret Blaney
Caroline Cayot
Sophia Daley
Nicholas Esch
Sarah Etten
Lauren Forsythe

Sierra Gonzalez
Samuel Hickman
Kaitlin Hinrichs
Alexandra Jennings
Callie Kosmalski
Michael Lasnier
Jay Lee
Christine Lorentzen
Isabella Mariani
Frances Marin
Jack Matuga
Maria Medini
Molly Prior
Samantha Rambo
Jonah Rueb
Nicole Schneider
Val Schram
Jenna Schwartz
Madelyn Thoenke
John Townsend
Julia Yancheck
Jake Yocum
Lauren Zantua

SOPHOMORES

Claire Boudreau
Megan Bratland
Katherine Bratvold
Katelyn Donatell
Roseah Germ
Reilly Greenfield
James Gunderson
Erin Haugh
Rachel Henn
Morgan Johnson
Austin Kees
Mariah Keopple
Gina Lambert
Rachel Luger
Mary Mueller
Robert Muniz
Joseph Petronack
Zachary Peterson
Eva Potvin
Emily Prokott
Samuel Sonntag

Paige Stephens
Natalie Sultan
Kristin Tollefson

FRESHMEN

Adam Behun
Madelynn Rausch

MIDDLE SCHOOL

Molly Pults

SILVER

SENIORS

Ashley Hinrichs
Kathleen Johnson
Thomas Knack
Miranda Meyer
Brittney Myers
Dana Nielsen
Kenzie Prater

JUNIORS

John Begley
Madison Ber
Eli Crum
Omoyemi Davies
Madison Detviler
Sophia Faust
Lindsey Featherstone
Ariana Franco
Ella French
Gina Henderson
Morgan Hohn
Kiley Knutson
Lily Kollitz
John Krawczyk
Sophia Larson
Madelyn Maietta
Eleanor Melby
Christopher Nelson
Grace Nelson
Elizabeth Ott
Austin Potter
Elise Potvin

Harrison Rust
Emily Schabert
Dilalah Schuster
Andrew Seifert
Lauren Snyder
Nicolette Souter
Jenna Steichen
Brooke Zander

SOPHOMORES

Sophia Behum
Holly Campbell
Brady Chuhe
Molly Knack
Matthew Kreimer
Joel LaChappelle
Kierney McGrath
Kaitlin McCurdy
Caroline Mensen
David Mordini
Anna Newton
Cody Peterson
Kennedy Sharp
Hannah Thorne
Emma Varley
Claire Westby

FRESHMEN

Cecilia Ball
Melissa Fellrath
Madison Renberg
Eliza Eger

BRONZE

SENIORS

Laura Anderson
Hannah Angeli
Karly Bischel
Madelyn Connors
Veronica Corrales
Eleanor Enright
Jacqueline Kaasa
April Klein
Erin Lambert

Lauren Lisowski
Lauren Lochen
Michaela Lochen
Alexa Mouton
Mika Pedro
McKenzie Steffen
Laura Stehler

JUNIORS

Zannah Esteb
Sam Henkes
Connor Propp
Erica Steigauf
Regina Turning
Kathleen Wertzler

SOPHOMORES

Harrison Audette
Jonathan Baldwin
Alyson Akers
Joseph Becker
Samantha Faust
Beth Fredricksen
Morgan Giese
James Gunderson
Gillian Hazelton
Rachel Henn
Kaitlin Koran
Katerina Lynn
Allison McElvain
Hannah Muntifer
Nicole Ochs
Courtney Rambo
Jack Still
Jayna Witzany
Melissa Zellmer

FRESHMEN

Adam Behun
Madelynn Rausch
Molly Pults

MIDDLE SCHOOL

Kaitlynn Mitchell





Athletic HONORS

2016 ATHLETIC HALL OF FAME INDUCTEES

Please join us for the 2016 Athletic Hall of Fame Induction

Sunday, September 18, 2016 | Hill-Murray Chapel & Commons

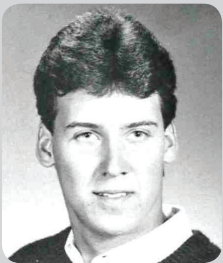
9:00 a.m. - Mass and Induction with brunch to follow | \$20.00 per person

Please RSVP to Christine Jones cjones@hill-murray.org | 651-7480- 2410



Tom Kinsella, '62

Football
Basketball
Track



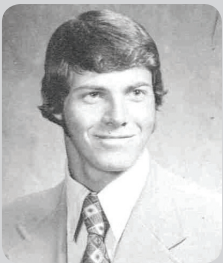
George Behr, '88

Football
Basketball
Baseball



Peggy Saracino Sutherland, '80

Track
Basketball
Cross Country



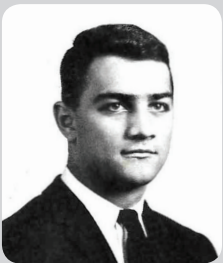
Steve Bernish, '75

Football
Basketball



Barry Persby, '71

Football
Baseball



John Heller, '64

Football
Hockey

INDIVIDUAL AND TEAM ATHLETIC HONORS

FALL 2015

GIRLS SOCCER

All-Conference:

Maddie Conners*
Ella French
Jenna Meader
Emma Sloom*

All-Conference Honorable Mention:

Alana Dressely
Ella Hulsey
Lily Kollitz
Olivia Venuta

All-State 2nd Team:

Maddie Conners

BOYS SOCCER

All-Conference:

Garrett Kaelin
Ben Krzyzowski
Troy Tischler

All-Conference Honorable Mention:

Trent Davies
Matt Munkelwitz
Sean Little

All-State 2nd Team:

Garrett Kaelin

VOLLEYBALL

Metro East Conference Champions; Section

4AA Champions; Section 4AA Silver

Academic Award; State Class AA Consolation

Champions

All-Conference:

Hannah Angeli*
Haley LaValle*
Ellie Schwartz

All-Conference Honorable Mention:

Alina Gartner
Sami Schneider
Claire Westby

MNVBCA All-State:

Hannah Angeli

MNVBCA All-State Honorable Mention:

Ellie Schwartz

Class AA State All-Tournament Team:

Ellie Schwartz

New School Record:

of Kills in a Season (419) Ellie Schwartz

New School Record:

of Aces in a Season (90) Hannah Angeli

New School Record:

of Digs in a Season (477) Haley LaValle

Academic All-State:

Sami Schneider

GIRLS TENNIS

Section 4AA Silver Academic Award

All-Conference:

Carly Heller*
Laura Stehler*
Monica Zink

All-Conference Honorable Mention:

Laura Anderson
Allie McElvain

Minnesota Tennis Coaches Association

Academic All-State Award:

Seniors who are important contributors to the
varsity team and have a cumulative GPA of
3.75 or higher.

Carly Heller
Mari Johnson
Laura Stehler

FOOTBALL

All-District:

Jake Ogren
Will Sonntag

All-District Honorable Mention:

Anthony Betti
John Eger
Chris Moore
Duncan Roman
Felipe Ybarra-Suggs

BOYS & GIRLS CROSS-COUNTRY

Boys Section 4AA Silver Academic Award

GIRLS SWIMMING & DIVING TEAM

True Team Section 4A Runner-Up; Class A

State Swimming and Diving Meet – 13th Place;

Section 4A Silver Academic Award

All-Conference:

Gabi Baldwin
Amelia Berg
Madison Berg
Sophia Daley
Lauren Forsythe
Catherine Nolde

All-Conference Honorable Mention:

Katie Lu Dick

Eva Potvin

All-State:

Gabi Baldwin
Amelia Berg
Madison Berg
Lauren Forsythe

Minnesota Swim and Dive Coaches Association

Academic All-State Award:

Seniors who are important contributors to the
varsity team and have a cumulative GPA of 3.75
or higher.

Sophia Peterson

New School Record: Gabi Baldwin – 100 Back-
stroke, 200 Individual Medley

New School Record: Madison Berg – 100 Butterfly
4A Section Champions:

Gabi Baldwin – 200 Individual Medley

Section 4A Coach of the Year:

Susan Lee

Section 4A Assistant Coach of the Year:

Jan Wasowicz

WINTER 2015-2016

ALPINE SKI

All-Conference:

Zach Slaviero

All-Conference Honorable Mention:

Maggie Blaney
Matt Gozum
Sydney Schmelz
Rachel Herzog
Taylor Wemple

Academic All-State:

Rachel Herzog

All-State:

Laura Anderson

All-Conference:

Chris Moore

All-Conference Honorable Mention:

Simeon Davis

Academic All-State:

Chris Moore*

BOYS BASKETBALL

All-Conference:

Chris Moore

All-Conference Honorable Mention:

Simeon Davis

Academic All-State:

Chris Moore*

* Metro East Conference All-Conference Academic Award Winner: Awarded by the Conference to Seniors who are All-Conference in a sport and have a GPA of 3.65 and above.

DANCE TEAM

All-Conference:

Erin Hacker*
April Klein

All-Conference Honorable Mention:

Gina Henderson
Lauren Zantua

All-State Jazz Participants:

Erin Hacker
Brittney Myers

GIRLS HOCKEY

Metro East Conference Champions; Section 4AA Champions; Class AA State Third Place

All-Metro Pioneer Press Finalist:

Mckenzie Steffen

All-Metro Star Tribune 1st Team:

Mckenzie Steffen

All-Metro Star Tribune 2nd Team:

Kenzie Prater

All-Conference:

Laura Anderson*
Abby Boreen
Jac Kaasa
Kenzie Prater*
Mckenzie Steffen

All-Conference Honorable Mention:

Lindsey Featherstone
Rachel Herzog
Taylor Wemple

Academic All-State:

Rachel Herzog
Mari Johnson

All-State:

Laura Anderson
Kenzie Prater
Mckenzie Steffen

All-State Honorable Mention:

Jac Kaasa

All-Tournament Team:

Abby Boreen
Mckenzie Steffen
Ms. Hockey Finalist: Mckenzie Steffen
Ms. Goalie Semi-Finalist: Mari Johnson

Hobie Baker Award:

Mari Johnson

BOYS HOCKEY

Metro East Conference Champions

Great 8 (Senior All-Stars):

Austin Peterson
Luke Ranallo
Casey Staum

All-Conference:

Jake Begley
Dylan Mills
Austin Peterson
Luke Ranallo
Marko Reifemberger

All-Conference Honorable Mention:

Brock Bremer
Ben Helgeson
Sean Ryan

2016 ATHENA AWARD WINNER

Ellie Schwartz

SPRING 2016

SOFTBALL

All-Conference:

Alli Clark
Katie Johnson

All-Conference Honorable Mention:

Anna Newton
Jayna Witzany

All-Section:

Katie Johnson
Jayna Witzany

All-State 2nd Team:

Katie Johnson

Pioneer Team Award:

Emily Henn
Tianna Onsomu

BASEBALL

All-Conference:

Joey Baumann
Tony Bobrowski
Ron Koran
Austin Peterson

All-Conference Honorable Mention:

Max Faust
Mitch Krueger
Austin Potter

TRACK

All-Conference:

Girls 4x200 – Sierra Arradondo, Johnna
Patterson, Val Schram, Jenna Schwartz
Girls 4x400 – Erin Haugh, Johnna Patterson,
Val Schram, Jenna Schwartz

All-Conference Honorable Mention:

400m – Johnna Patterson

High Jump and Pole Vault – Nicole Schneider

Long Jump – Michael Portz

GIRLS GOLF

Metro East Conference Champions

All-Conference:

Olivia Johnson*

All-Conference Honorable Mention:

Caitlin Noseworthy

Olivia Venuta

State Qualifier:

Olivia Johnson

BOYS GOLF

All-Conference:

Sam Carlson
Ben Warian

State Qualifier:

Ben Warian

BOYS TENNIS

All-Conference Honorable Mention:

Jonah Rueb
Jay Salinas

BOYS LACROSSE

All-Conference:

Felipe Ybarra-Suggs

All-Conference Honorable Mention:

Henry Boyer
Conor Varley
Nicholas Visich

All-Section:

Conor Varley
Felipe Ybarra-Suggs

Individual Academic All-State:

Jake Kranz
Johnny Krawczyk
Nicholas Visich
Nick Weimann

US Lacrosse All-Academic:

Nicholas Visich

GIRLS LACROSSE

Metro East Conference Champions

All-Conference:

Abby Becker
Caroline Cayot
Kyla Donovan*
Mari Johnson*

All-Conference Honorable Mention:

Taylor Henthorne
Mahalia Mgeni



Meet
BRENT JOHNSON
Director of Assessment & The Nicholas Center



If there's one thing that stands out about Hill-Murray's new Director of Assessment, Brent Johnson, it's his passion for working with students with disabilities. And not just those that are defined. "Everyone has struggles. But struggles should not be something that holds anyone back, but rather makes them who they are," Brent says with conviction. "Disabilities have made me who I am." He prides himself on having a big heart for things that are difficult for people and helping them set goals and find joy in working to achieve them.

So what are his plans for his new role at Hill-Murray? He plans to bring in a system to give kids milestones for success. This will require working closely with Jim Hansen to develop what Brent calls the "Trifecta" for educating students – where parents, students and teachers all work together to create goals for students based on their particular skills and needs. His goal is simple- every student should meet base skills at each grade level.

To do this, he plans not only to assist students with disabilities, but to assist teachers with differentiated teaching in their classrooms. This type of individualized learning includes teaching solid study skills and getting students to succeed within their regular classrooms, thereby not having to leave to get special help.

When he's not strategizing for his first year here at Hill-Murray, Brent loves hunting and fishing and spending time with his family. He and his wife, Amanda, have three boys ages 9, 7 & 5 that keep them plenty busy. Make sure you stop in to meet Brent the next time you're at Hill-Murray!



VISION

The Nicholas Center was established at Hill-Murray in 2012 and named in honor of St. Nicholas of Myra, the protector and guardian of all children. The Nicholas Center focuses on assisting students to work to their strengths and to develop the personal learning strategies and capabilities needed to thrive in Hill-Murray's rigorous academic environment. Pioneers with a variety of learning styles and needs can receive appropriate support through the Learning Center, providing a bridge for those who learn differently or for those who find the college prep environment a challenge.

For more information about Nicholas Center programs, contact our Director of Assessment and the Nicholas Center Brent Johnson at 651-491-9152 or bgjohnson@hill-murray.org or Program Director Linda Strahan at 651-748-2220 or lstrahan@hill-murray.org.





LASALLIAN & BENEDICTINE AWARD WINNERS



When Hill-Murray was founded in 1971, charisms from founding religious orders – the Benedictine Sisters and the Lasallian Brothers– helped capture the essence of these two awards. These honors are awarded to one young woman and one young man who have shown evidence of living lives rooted in Christian service. This year’s recipients are Angela Yarusso and Colin Atkinson, respectively.

Angela and Colin have both shown tremendous dedication to Christian service throughout their time at Hill-Murray School. Colin, a Gold Service award-winner, participated in numerous groups during his time at Hill-Murray as a member of Peer Listening, Peer Ministry, cross country, band, and National Honor Society. His most memorable service experience occurred during his Junior year when he travelled to Guatemala. Colin and other Hill-Murray students spent their time moving rock, preparing bricks, and laying the foundation for houses being built in the hills of San Lucas.

Angela, a student at Hill-Murray since the 7th grade, immersed herself in almost every facet of the school community. Angela values student leadership and the opportunity to serve her peers through Student Council, National Honor Society, Ambassadors, Peer Ministry, Peer Tutoring, the L.I.F.E group, C.A.R.E, and the H-M band. Angela also finds time to help those outside of the Hill-Murray community through her work with Simpson Shelter, St. Christopher’s Place, Feed My Starving Children, Relay for Life, and Habitat for Humanity.

Angela will attend the University of Wisconsin-La Crosse in the fall and will major in Psychology. Colin will be attending the University of Minnesota and major in Mechanical Engineering.

2016 COLLEGE SCHOLARSHIP AWARD WINNERS

Laura Anderson Hill-Murray CLASS Scholarship	Legacy Scholarship/College of St. Benedict	Army ROTC Scholarship/Vanderbilt University	University	Polytechnic Institute Recognition Award/Resselaer	of Minnesota, Twin Cities
Amanda Andert De La Salle Christian Brothers Scholarship/St. Mary’s University of Minnesota	Service Scholarship/College of St. Benedict	Alyson Brinker Founders Scholarship/Denison University	Randall Clintsman President’s Scholarship/St. John’s University	Polytechnic Institute Presidential Scholarship/Trine University	Carlson School of Management Scholarship/University of Minnesota, Twin Cities
Catholic High School Award/St. Mary’s University of Minnesota	Athletic Scholarship/Minnesota State University, Mankato	Dean’s Scholarship/St. Olaf College	Madelyn Conners Academic Scholarship/Winona State University	University of Minnesota	Academic Scholarship/University of St. Thomas
Hannah Angeli Athletic Scholarship/Duquesne University	Joseph Baumann Academic Scholarship/Wartburg College	Trustee Scholarship/Lawrence University	Veronica Corrales Hill-Murray CLASS Scholarship	Morgan Dressely Academic Scholarship/University of St. Thomas	Maxwell Faust Trustee Scholarship/St. Mary’s University of Minnesota
Athletic Scholarship/Loyola University Chicago	Madison Bestler Père Marquette Award/Marquette University	Chancellor’s Scholarship/Chapman University	John Dean Presidential Scholarship/Montana State University, Bozeman	Board of Trustees Scholarship/University of St. Thomas	Catholic High School Award/St. Mary’s University of Minnesota
Athletic Scholarship/Manhattan College	University Chicago	Founders Award/Creighton University	John Butler RedHawk Excellence Scholarship/Miami University Ohio	General Accountancy Scholarship/University of Mississippi	University Scholars Award/Michigan State University
Athletic Scholarship/University of Nebraska, Omaha	Karly Bischel Board of Trustees Scholarship/University of St. Thomas	Chancellor Award/University of Denver	John Dean Presidential Scholarship/Montana State University, Bozeman	Soaring Eagle Scholarship/University of Wisconsin, La Crosse	Presidential Study Abroad Scholarship/Michigan State University
Colin Atkinson Academic Scholarship/University of St. Thomas	Anthony Bobrowski Athletic Scholarship/Missouri Valley College	John Boosalis Army ROTC Scholarship/University of Wisconsin, Madison	John Dean Presidential Scholarship/Montana State University, Bozeman	Newman Wickland Teen Volunteer Scholarship/HealthEast Foundation	David Moe Academic Scholarship/University of St. Thomas
Père Marquette Award/Marquette University	Samuel Carlson Academic Scholarship/Regis University		John Dean Presidential Scholarship/Montana State University, Bozeman	David Moe Academic Scholarship/University of St. Thomas	President’s Scholarship/St. Olaf College
Out of State Academic Award/Iowa State University	Paris DeLisle Academic Scholarship/Concordia University		John Dean Presidential Scholarship/Montana State University, Bozeman	David Moe Academic Scholarship/University of St. Thomas	Academic Scholarship/Lawrence University
Brittney Ayers			John Dean Presidential Scholarship/Montana State University, Bozeman	David Moe Academic Scholarship/University of St. Thomas	More Light! Scholarship/Lawrence University
			John Dean Presidential Scholarship/Montana State University, Bozeman	David Moe Academic Scholarship/University of St. Thomas	Dean’s Scholarship/Gustavus Adolphus College
			John Dean Presidential Scholarship/Montana State University, Bozeman	David Moe Academic Scholarship/University of St. Thomas	Christopher Moore Clark Dietz Inc. Scholarship/University of Wisconsin, Platteville
			John Dean Presidential Scholarship/Montana State University, Bozeman	David Moe Academic Scholarship/University of St. Thomas	Dean’s Scholarship/Gustavus Adolphus College
			John Dean Presidential Scholarship/Montana State University, Bozeman	David Moe Academic Scholarship/University of St. Thomas	Paul Rucker Scholarship/Gustavus Adolphus College
			John Dean Presidential Scholarship/Montana State University, Bozeman	David Moe Academic Scholarship/University of St. Thomas	Founders Scholarship/Luther College
			John Dean Presidential Scholarship/Montana State University, Bozeman	David Moe Academic Scholarship/University of St. Thomas	Diversity Enrichment Scholarship/Luther College

Hamline University	Ronald Koran Award for Competitive Excellence/Iowa State University
Jack Galler Academic Scholarship/University of St. Thomas	Mitchell Krueger Dean’s Scholarship/St. John’s University
Erin Hacker Dean’s Scholarship/Gustavus Adolphus College	Erin Lambert Academic Scholarship/University of St. Thomas
President’s Scholarship/College of St. Benedict	Presidential Scholarship/Drake University
Legacy Scholarship/College of St. Benedict	Catholic Education Scholarship/University of San Diego
President’s Scholarship/St. Catherine University	Presidential Scholarship/College of St. Benedict
Legacy Scholarship/Hamline University	Heritage Scholarship/Hamline University
Caroline Heller Founders Scholarship/Texas Christian University	Honors Scholarship/Hamline University
Taylor Henthorne Academic Merit Scholarship/Western Kentucky University	Père Marquette Award/Marquette University
Rachel Herzog Athletic Scholarship/St. Cloud State University	Benedictine Scholarship/College of St. Scholastica
Kathleen Johnson Academic Merit Scholarship/Western Kentucky University	Honors Scholarship/DePauw University
Targeted Non-Resident Academic Scholarship/Western Kentucky University	Andrea Laudi Roman Shaffel, S.J. Award/Creighton University
Polk-Burnett Service Scholarship	Presidential Scholarship/St. Catherine University
Mari Johnson Presidential Scholarship/Hamline University	Dean’s Scholarship/Gustavus Adolphus College
Trustee Award/Quinnipiac University	Xavier Scholarship/Xavier University
Loyola Scholarship/Loyola University Chicago	Wallace Scholarship/Macalaster College
Olivia Johnson Carlson School of Management Scholarship/University of Minnesota, Twin Cities	Haley LaValle President’s Scholarship/College of St. Benedict
University of Minnesota	Lauren Lisowski Iron Range Scholarship/University of Minnesota, Twin Cities
Joy Dunna Dean’s Scholarship/Gustavus Adolphus College	Presidential Scholarship/College of St. Benedict
Paul Rucker Scholarship/Gustavus Adolphus College	Dean’s Scholarship/St. Olaf College
Dean’s Scholarship/College of St. Benedict	Gustavus Scholarship/Gustavus Adolphus College
Nicholas Feenstra Presidential Honor Scholarship/North Dakota State University	Dean’s Scholarship/Gustavus Adolphus College
Anne Franey Academic Scholarship/University of St. Thomas	Founders Award/Creighton University
Kyla Donovan Leadership Award/Rensselaer	General Accountancy Scholarship/University of Mississippi
	Academic Excellence Scholarship/University of Mississippi
	Holmes Scholarship/University of Mississippi
	UA Scholar Scholarship/University of Alabama
	University Scholars Award/Michigan State University
	Presidential Study Abroad Scholarship/Michigan State University
	Jacqueline Kaasa Student Success Scholarship/Bemidji State University
	Garrett Kaelin Early Auggie Scholarship/Augsburg College
	Regents’ Scholarship/Augsburg College
	First Advantage Application Scholarship/Luther College

Hamline University	Ronald Koran Award for Competitive Excellence/Iowa State University
Jack Galler Academic Scholarship/University of St. Thomas	Mitchell Krueger Dean’s Scholarship/St. John’s University
Erin Hacker Dean’s Scholarship/Gustavus Adolphus College	Erin Lambert Academic Scholarship/University of St. Thomas
President’s Scholarship/College of St. Benedict	Presidential Scholarship/Drake University
Legacy Scholarship/College of St. Benedict	Catholic Education Scholarship/University of San Diego
President’s Scholarship/St. Catherine University	Presidential Scholarship/College of St. Benedict
Legacy Scholarship/Hamline University	Heritage Scholarship/Hamline University
Caroline Heller Founders Scholarship/Texas Christian University	Honors Scholarship/Hamline University
Taylor Henthorne Academic Merit Scholarship/Western Kentucky University	Père Marquette Award/Marquette University
Rachel Herzog Athletic Scholarship/St. Cloud State University	Benedictine Scholarship/College of St. Scholastica
Kathleen Johnson Academic Merit Scholarship/Western Kentucky University	Honors Scholarship/DePauw University
Targeted Non-Resident Academic Scholarship/Western Kentucky University	Andrea Laudi Roman Shaffel, S.J. Award/Creighton University
Polk-Burnett Service Scholarship	Presidential Scholarship/St. Catherine University
Mari Johnson Presidential Scholarship/Hamline University	Dean’s Scholarship/Gustavus Adolphus College
Trustee Award/Quinnipiac University	Xavier Scholarship/Xavier University
Loyola Scholarship/Loyola University Chicago	Wallace Scholarship/Macalaster College
Olivia Johnson Carlson School of Management Scholarship/University of Minnesota, Twin Cities	Haley LaValle President’s Scholarship/College of St. Benedict
University of Minnesota	Lauren Lisowski Iron Range Scholarship/University of Minnesota, Twin Cities
Joy Dunna Dean’s Scholarship/Gustavus Adolphus College	Presidential Scholarship/College of St. Benedict
Paul Rucker Scholarship/Gustavus Adolphus College	Dean’s Scholarship/St. Olaf College
Dean’s Scholarship/College of St. Benedict	Gustavus Scholarship/Gustavus Adolphus College
Nicholas Feenstra Presidential Honor Scholarship/North Dakota State University	Dean’s Scholarship/Gustavus Adolphus College
Anne Franey Academic Scholarship/University of St. Thomas	Founders Award/Creighton University
Kyla Donovan Leadership Award/Rensselaer	General Accountancy Scholarship/University of Mississippi
	Academic Excellence Scholarship/University of Mississippi
	Holmes Scholarship/University of Mississippi
	UA Scholar Scholarship/University of Alabama
	University Scholars Award/Michigan State University
	Presidential Study Abroad Scholarship/Michigan State University
	Jacqueline Kaasa Student Success Scholarship/Bemidji State University
	Garrett Kaelin Early Auggie Scholarship/Augsburg College
	Regents’ Scholarship/Augsburg College
	First Advantage Application Scholarship/Luther College

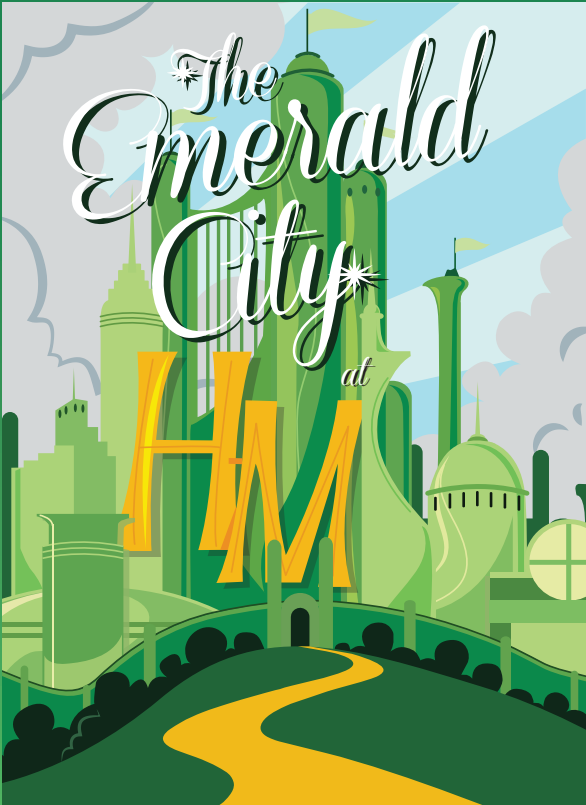
Hamline University	Ronald Koran Award for Competitive Excellence/Iowa State University
Jack Galler Academic Scholarship/University of St. Thomas	Mitchell Krueger Dean’s Scholarship/St. John’s University
Erin Hacker Dean’s Scholarship/Gustavus Adolphus College	Erin Lambert Academic Scholarship/University of St. Thomas
President’s Scholarship/College of St. Benedict	Presidential Scholarship/Drake University
Legacy Scholarship/College of St. Benedict	Catholic Education Scholarship/University of San Diego
President’s Scholarship/St. Catherine University	Presidential Scholarship/College of St. Benedict
Legacy Scholarship/Hamline University	Heritage Scholarship/Hamline University
Caroline Heller Founders Scholarship/Texas Christian University	Honors Scholarship/Hamline University
Taylor Henthorne Academic Merit Scholarship/Western Kentucky University	Père Marquette Award/Marquette University
Rachel Herzog Athletic Scholarship/St. Cloud State University	Benedictine Scholarship/College of St. Scholastica
Kathleen Johnson Academic Merit Scholarship/Western Kentucky University	Honors Scholarship/DePauw University
Targeted Non-Resident Academic Scholarship/Western Kentucky University	Andrea Laudi Roman Shaffel, S.J. Award/Creighton University
Polk-Burnett Service Scholarship	Presidential Scholarship/St. Catherine University
Mari Johnson Presidential Scholarship/Hamline University	Dean’s Scholarship/Gustavus Adolphus College
Trustee Award/Quinnipiac University	Xavier Scholarship/Xavier University
Loyola Scholarship/Loyola University Chicago	Wallace Scholarship/Macalaster College
Olivia Johnson Carlson School of Management Scholarship/University of Minnesota, Twin Cities	Haley LaValle President’s Scholarship/College of St. Benedict
University of Minnesota	Lauren Lisowski Iron Range Scholarship/University of Minnesota, Twin Cities
Joy Dunna Dean’s Scholarship/Gustavus Adolphus College	Presidential Scholarship/College of St. Benedict
Paul Rucker Scholarship/Gustavus Adolphus College	Dean’s Scholarship/St. Olaf College
Dean’s Scholarship/College of St. Benedict	Gustavus Scholarship/Gustavus Adolphus College
Nicholas Feenstra Presidential Honor Scholarship/North Dakota State University	Dean’s Scholarship/Gustavus Adolphus College
Anne Franey Academic Scholarship/University of St. Thomas	Founders Award/Creighton University
Kyla Donovan Leadership Award/Rensselaer	General Accountancy Scholarship/University of Mississippi
	Academic Excellence Scholarship/University of Mississippi
	Holmes Scholarship/University of Mississippi
	UA Scholar Scholarship/University of Alabama
	University Scholars Award/Michigan State University
	Presidential Study Abroad Scholarship/Michigan State University
	Jacqueline Kaasa Student Success Scholarship/Bemidji State University
	Garrett Kaelin Early Auggie Scholarship/Augsburg College
	Regents’ Scholarship/Augsburg College
	First Advantage Application Scholarship/Luther College

Hamline University	Ronald Koran Award for Competitive Excellence/Iowa State University
Jack Galler Academic Scholarship/University of St. Thomas	Mitchell Krueger Dean’s Scholarship/St. John’s University
Erin Hacker Dean’s Scholarship/Gustavus Adolphus College	Erin Lambert Academic Scholarship/University of St. Thomas
President’s Scholarship/College of St. Benedict	Presidential Scholarship/Drake University
Legacy Scholarship/College of St. Benedict	Catholic Education Scholarship/University of San Diego
President’s Scholarship/St. Catherine University	Presidential Scholarship/College of St. Benedict
Legacy Scholarship/Hamline University	Heritage Scholarship/Hamline University
Caroline Heller Founders Scholarship/Texas Christian University	Honors Scholarship/Hamline University
Taylor Henthorne Academic Merit Scholarship/Western Kentucky University	Père Marquette Award/Marquette University
Rachel Herzog Athletic Scholarship/St. Cloud State University	Benedictine Scholarship/College of St. Scholastica
Kathleen Johnson Academic Merit Scholarship/Western Kentucky University	Honors Scholarship/DePauw University
Targeted Non-Resident Academic Scholarship/Western Kentucky University	Andrea Laudi Roman Shaffel, S.J. Award/Creighton University
Polk-Burnett Service Scholarship	Presidential Scholarship/St. Catherine University
Mari Johnson Presidential Scholarship/Hamline University	Dean’s Scholarship/Gustavus Adolphus College
Trustee Award/Quinnipiac University	Xavier Scholarship/Xavier University
Loyola Scholarship/Loyola University Chicago	Wallace Scholarship/Macalaster College
Olivia Johnson Carlson School of Management Scholarship/University of Minnesota, Twin Cities	Haley LaValle President’s Scholarship/College of St. Benedict
University of Minnesota	Lauren Lisowski Iron Range Scholarship/University of Minnesota, Twin Cities
Joy Dunna Dean’s Scholarship/Gustavus Adolphus College	Presidential Scholarship/College of St. Benedict
Paul Rucker Scholarship/Gustavus Adolphus College	Dean’s Scholarship/St. Olaf College
Dean’s Scholarship/College of St. Benedict	Gustavus Scholarship/Gustavus Adolphus College
Nicholas Feenstra Presidential Honor Scholarship/North Dakota State University	Dean’s Scholarship/Gustavus Adolphus College
Anne Franey Academic Scholarship/University of St. Thomas	Founders Award/Creighton University
Kyla Donovan Leadership Award/Rensselaer	General Accountancy Scholarship/University of Mississippi
	Academic Excellence Scholarship/University of Mississippi
	Holmes Scholarship/University of Mississippi
	UA Scholar Scholarship/University of Alabama
	University Scholars Award/Michigan State University
	Presidential Study Abroad Scholarship/Michigan State University
	Jacqueline Kaasa Student Success Scholarship/Bemidji State University
	Garrett Kaelin Early Auggie Scholarship/Augsburg College
	Regents’ Scholarship/Augsburg College
	First Advantage Application Scholarship/Luther College

Hamline University	Ronald Koran Award for Competitive Excellence/Iowa State University
Jack Galler Academic Scholarship/University of St. Thomas	Mitchell Krueger Dean’s Scholarship/St. John’s University
Erin Hacker Dean’s Scholarship/Gustavus Adolphus College	Erin Lambert Academic Scholarship/University of St. Thomas
President’s Scholarship/College of St. Benedict	Presidential Scholarship/Drake University
Legacy Scholarship/College of St. Benedict	Catholic Education Scholarship/University of San Diego
President’s Scholarship/St. Catherine University	Presidential Scholarship/College of St. Benedict
Legacy Scholarship/Hamline University	Heritage Scholarship/Hamline University
Caroline Heller Founders Scholarship/Texas Christian University	Honors Scholarship/Hamline University
Taylor Henthorne Academic Merit Scholarship/Western Kentucky University	Père Marquette Award/Marquette University
Rachel Herzog Athletic Scholarship/St. Cloud State University	Benedictine Scholarship/College of St. Scholastica
Kathleen Johnson Academic Merit Scholarship/Western Kentucky University	Honors Scholarship/DePauw University
Targeted Non-Resident Academic Scholarship/Western Kentucky University	Andrea Laudi Roman Shaffel, S.J. Award/Creighton University
Polk-Burnett Service Scholarship	Presidential Scholarship/St. Catherine University
Mari Johnson Presidential Scholarship/Hamline University	Dean’s Scholarship/Gustavus Adolphus College
Trustee Award/Quinnipiac University	Xavier Scholarship/Xavier University
Loyola Scholarship/Loyola University Chicago	Wallace Scholarship/Macalaster College
Olivia Johnson Carlson School of Management Scholarship/University of Minnesota, Twin Cities	Haley LaValle President’s Scholarship/College of St. Benedict
University of Minnesota	Lauren Lisowski Iron Range Scholarship/University of Minnesota, Twin Cities
Joy Dunna Dean’s Scholarship/Gustavus Adolphus College	Presidential Scholarship/College of St. Benedict
Paul Rucker Scholarship/Gustavus Adolphus College	Dean’s Scholarship/St. Olaf College
Dean’s Scholarship/College of St. Benedict	Gustavus Scholarship/Gustavus Adolphus College
Nicholas Feenstra Presidential Honor Scholarship/North Dakota State University	Dean’s Scholarship/Gustavus Adolphus College
Anne Franey Academic Scholarship/University of St. Thomas	Founders Award/Creighton University
Kyla Donovan Leadership Award/Rensselaer	General Accountancy Scholarship/University of Mississippi
	Academic Excellence Scholarship/University of Mississippi
	Holmes Scholarship/University of Mississippi
	UA Scholar Scholarship/University of Alabama
	University Scholars Award/Michigan State University
	Presidential Study Abroad Scholarship/Michigan State University
	Jacqueline Kaasa Student Success Scholarship/Bemidji State University
	Garrett Kaelin Early Auggie Scholarship/Augsburg College
	Regents’ Scholarship/Augsburg College
	First Advantage Application Scholarship/Luther College



PIONEER PREMIER AUCTION



Picture Yourself Here!
Check out some snapshots highlighting events of the night and some of our fabulous guests from last year's event! The 2017 Auction is April 14th - make sure to save the date!




There's no place like Hill-Murray




There's no place like Hill-Murray



PERFORMING ARTS

“We have the largest percentage of our student population participating in our shows. No other school comes close. Our participants are hard workers who want to exceed expectations whenever they can!” states Ben Ballentine, H-M Theatre Director. There’s no doubt that the Hill-Murray theatre program sets itself apart. With a well-chronicled reputation in the greater community as one of the finest programs in the state, Hill-Murray Theatre is known for its professionalism, excellence, and outstanding programming.

The fall production of *Annie* was undoubtedly one of the greatest highlights of 2015. It was the best-selling show of the past 10+ years. In addition, Hill-Murray hosted over 1,800 students from local elementary schools free of charge and partnered with Coco’s Heart Dog Rescue to raise over \$1,000.

This year, Hill-Murray Theatre won two Overall Outstanding Production Awards for *Annie* and *Guys & Dolls*, the highest possible award, through the Hennepin Theatre Trust’s Spotlight Awards. In the state of Minnesota, Hill-Murray was one of only two schools to do so.

What’s next for Hill-Murray Theatre? “Next year, we’re trying some new things, including running two shows ‘in rep,’ or at the same time, and performing some staged readings of plays and musicals,” Ballentine says. Over the course of the coming school year, nearly one out of every five students will participate in a theatre-related production, onstage or behind the scenes.



COCURRICULAR SUCCESS



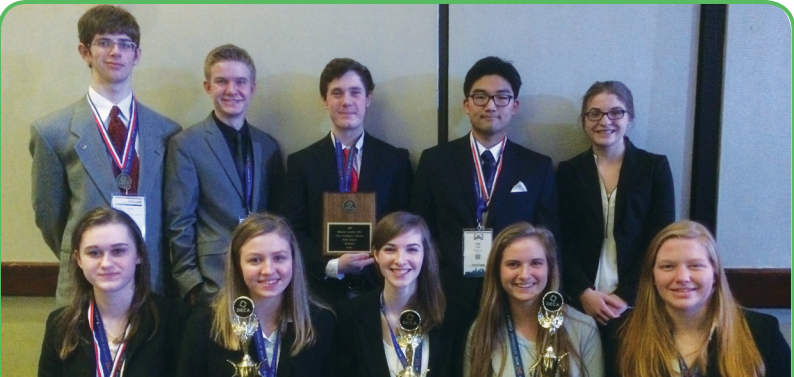
Art Show

Hill-Murray held its Annual All-School Art Show during the week of May 2. There were over 130 pieces of artwork on display. Students submitted art in a variety of mediums: drawings, paintings, photography, ceramics, and graphic design.



Choir

The Hill-Murray Vivace Choir performed the National Anthem on May 12 at the Ramsey County Law Enforcement Memorial Ceremony. St. Paul Police Officer and Hill-Murray alum, Ron Ryan Jr. was remembered in a speech given by Ramsey County Attorney John Choi.



DECA

Students in the Hill-Murray DECA Chapter put forth tremendous efforts at the State competition March 6-8. Events ranged from role-plays and business proposals to sales demonstrations and mock interviews.



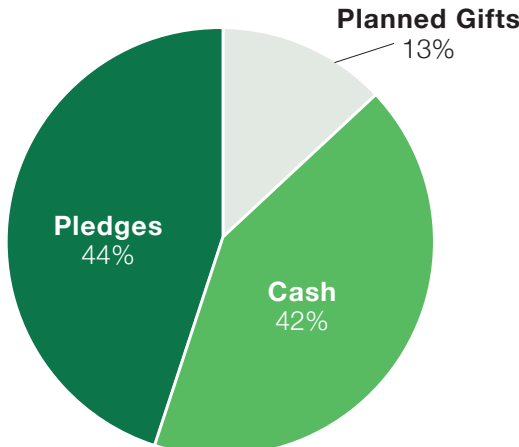
Robotics

Robotics is an incredible opportunity for students to immerse themselves in the world of technology. Throughout the year, students are exposed to CAD design, programming in multiple languages, and basic construction techniques.

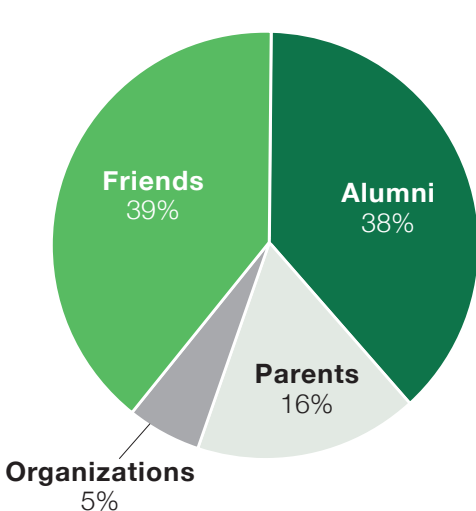


FINANCIAL SUMMARY

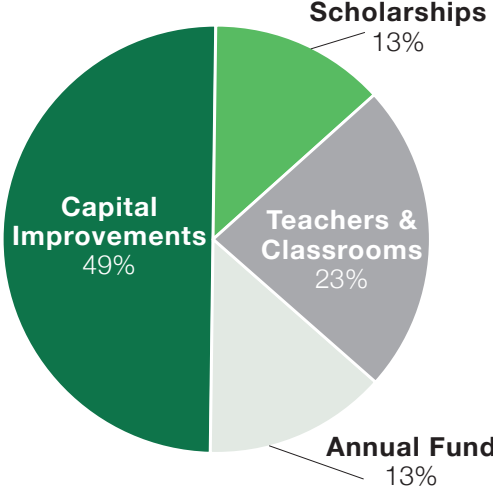
GIFTS RAISED \$6,770,203.69



NUMBER OF DONORS 4,072



THE IMPACT \$6,770,203.69



OPERATING REVENUES (date-date)

Scholarships & Tuition Support
\$901,940

Teachers and Classrooms
\$1,475,203.24

Annual Fund
\$932,278.45

Capital Improvements
\$3,360,782

OPERATING EXPENSES (date-date)

Scholarships & Tuition Support
\$901,940

Teachers and Classrooms
\$1,475,203.24

Annual Fund
\$932,278.45

Capital Improvements
\$3,360,782

HILL-MURRAY EMERALD CLUB MEMBERS 2015

A.B. Cenac, Jr. Foundation Andersen Foundation* Marni (Haydock) and Chuck Bond Lisa and Steve Cichy Janeice Ann De Lisle and David Hodgson	The DeLonaïs Foundation* Don and Pat Garofalo Daniel and Carrie Hackman James W. Hansen Mark and Teri Hanson Hill-Murray Fathers Club*	Hill-Murray Mothers Club* Mike and Jan Johnson Clyde and Gloria Klosner Kopp Family Foundation Andrew Nath and Katie Regan Nath Connie and Phil Paquette*	Pioneer Booster Club* Premier Banks Jim and Julie Rechiene Dan and Korie Regan Don and Jean Regan* Kelly Regan Michael O. and Mary E. Regan	Patrick O. & Mary K. Regan Sean O. and Mary Dolan Regan Colleen Regan Espana Christine and Dan Rice Scott Richards Estate Roy T. Rueb Family Peter and Melissa Santrach	Gary and Pat Sauer* William C. Schram, Jr. and Dolores Tuition Assistance Fund* Timothy and Christine Steigauf Bill and Carol Sweasy Phil and Becky Taylor	Gary & Sheri Vasko Family Fund of the Catholic Community Foundation Roger & Lynn Vasko, St. Peter Fund of the Catholic Community John and Mary Wren* Tony and Ruth Yocum*	Guy and Wendy Young *Charter Members
---	---	--	---	---	--	--	---

SUSTAINING THE VISION

ST BENEDICT SOCIETY

Gifts of \$100,000+
The Garofalo Foundation
Hill-Murray Mothers Club
John and Marla Simmet Family Fund

Gifts of \$50,000-\$99,999

Hill-Murray Fathers Club
Ronald and Marilyn Mitsch
Pioneer Foundation for the Performing Arts
Premier Banks
Shannon and Chuck Runyon
Robert and Margaret Simmet
The Anthony and Ruth Ann Yocum Donor Advised Fund of the St. Croix Valley Foundation

Gifts of \$25,000-\$49,999

Paul and Eileen Angeli
Carl and Kim Casale
Catholic Services Appeal Foundation
Daniel and Carrie Hackman
Steven and Julie Henseler
Michael & Janet Johnson Fund of the St. Croix Valley Foundation
Jim and Molly Jungbauer
Donald B. and Jean A. Regan
Michael and Karen Roman
Michael and Elizabeth Roth
Carole and Lee Schram
Timothy and Shannon Yocum
Anthony and Sara (Joynson) Yocum
Guy Young

Gifts of \$10,000-\$24,999

Alumni of Concordia Academy Group
Kathy and Tim Ball
Marni (Haydock) and Chuck Bond
Lisa and Steve Cichy
Jane Schoelch DeFlorio
Jim and Maureen Detviler
Flaherty Family Foundation
Julia Garofalo Snell D.D.S. and Todd Snell

Gregory and Suzanne Gartner

Gerald and Mary Glomb
Mr. and Mrs. Brian Hazelton
Mark and Ann Heller
Keyot
Peter and Ingrid Koller
Kranz Family Fund of the Catholic Community Foundation
David and Ann Langer
Joe Lasnier & Denise Hun-ninghake
Patricia Lyon
John K and Margaret A Ogren Foundation
Michael and Kathleen Pearson
Patrick O. & Mary K. Regan
Christine and Dan Rice
Mr. and Mrs. Michael Rice
Salute Dental
Peter and Melissa Santrach
John Shields
Walter and Leona Schmitt Family Foundation
William C. Schram Tuition Asst. Fund for Hill-Murray School
Skipper Slawik Fund of the Cath-olic Community Foundation
Target Stores
Tartan Area Youth
Enrichment Inc.
Mike and Connie Toninato
Ms. Mary K. Ustipak
Ronald and Marsha Woessner
Mr. and Mrs. John E. Wren
Rory and Diane Yancheck

ST. SCHOLASTICA SOCIETY

Gifts of \$5,000-\$9,999
Achieving Dreams
Ronald and Catharine Berqual
Anonymous
Center for Diagnostic Imaging
Paul and Amy (Melchior) Dinzeo
DuFresne Family Charitable Fund
Nancy and William Given
Goodrich Foundation
Ingersoll-Rand Charitable Foundation

Ronald and Kirsten Johnson

Jerry Karel
Scott and Ann Kennedy
Daniel and Rana Khoury
Anne Klein
Michael and Jeanne Koller
Michelle and Brian Kueppers
Nancy K. Kullas
Mark and Irene Lambert
Mr. Charles Leach
Patrick and Aleshia McNamara
Mr. and Mrs. Mike Mueller
Andrew Nath and Katie Regan Nath
Randal and Janell Newton
Paul and Carol Petronack
Kenneth and Jane Powell
Garrett and Amanda Regan
Jack and Evelyn Reif
Jean Ristow
Andrew and Heather Rocheford
Stephanie and Craig Rustad
Sarah Rudisill
Molly and Jake Schaffer
Dennis and Michelle Schiltgen
Don and Mary Shipp
Matt Sklar and Kim Loria
St. Anne Catholic School
Stillwater Investment Manage-ment, LLC
Tolomatic
Wells Fargo Matching Gifts Program
Jacki and Brad Wings
Joseph and Kellee Wren
Marlene Yaruso
Jim and Bree Young
Mary and Bill Zimmer

ST. JOHN BAPTIST de LA SALLE SOCIETY

Gifts of \$2,500-\$4,999
Ameriprise Financial Gift Match-ing Program
Anonymous
Don and Amy Ayd
Bryan and Cathy Behun
George and Laura Berg
Thomas and Julie Betti

Ron and Patricia Blake

James and Judith Brass
Tony Ciro
Deluxe Corporation Foundation
Dr. John S. Dickhudt and Dr. Deborah K. Sepeta
Kathy and Jack Elliott
Tim and Sue Fangel
Scott and Sue Faust
Terry and Kim Faust
Eric and Tamara Galler and Family
Cheri M. Gerenz
Mr. and Mrs. Jeffrey Gibbons
Tony and Jodie (Meyer) Gruba
John and Melani Hause
Ronald and Paula Herold
Horwitz, NS/I
Matt and Pam Jennings
Bill and Connie Kelly
Laura Kelly & Anjie Cayot - Keyot
Mary Zoe Klein
James and Denise Koller
Kopp Family Foundation
Joseph and Liana Kvidera
Kevin and Beth Lafeber
Frank and Mary Lambert
Jeffrey and Kelly Lavers
David and Jorié LePlayv
Mark B. Luger
Mr. and Mrs. Jeff Lynn
Patrick and Carrie Maurer
Patrick and Kari McGrath
Minnesota Coaches, Inc.
Minnesota Independent School Forum
Pioneer Concessions
Kelly Regan
Renovation Systems, Inc.
Kimberly Roe Nelson and Daniel Nelson
Sign-zone Inc
Michael and Holly Sonntag
Todd and Tracy Steffen
Jeffrey and Kirsten Stone
SW 47 Investments Inc.
TADS
Patrick and Helen Tinucci

John and Bonnie Treacy

Gary and Tom Ulness
John and Mary Warian
Mary Pat Navins Wlazik

ST. ELIZABETH ANN SETON SOCIETY
Gifts of \$1,000-\$2,499
John and Janet (Wietcki) Ahern
Craig and Mary Lou Alesso
Lawrence and Laurie Altman
Ameriprise Financial Employee Giving Campaign
Ancient Order of Hibernians
Jody and Steve Anderly
Andersen Corporation
Mark and Kelley Anderson
James E. Asenbrenner
Bob and Barb Atkinson
Matthew and Mira Baldwin
Daniel M. Barrett
Mark Barrett
Denise and Steve Bates
Donna J. Baumann
Joseph and Teresa Baumann
Berqual Plumbing
Ryan and Jessica Bierwerth
Jonathan and Melissa Brass
Dawn Lonetree Campion
Lance and Barb Carlson
Dr. Susan N. Caulfield and Mr. Bruce Caulfield
Alex and Judy Cirillo
The Ciro Family
Lee and Yvonne Clintsman
Duane M. Cloud
Mr. and Mrs. James Cochran
Dan and Martha Conners
Michael and Mary Kay Cooney
Tony and Erika Curella
Degree Of Honor Protection/SAVE MN #505
Will and Cathy Donovan
Douglas and Yvette Du Fresne
Charles and Carol Dunham
John and Ludmila Eklund
Thomas and Sharon Engels
Fastenal

Thomas and Lisa Faust

Gary and Betty Faust
Eugenio and Gail (Tischler) Flores
Timothy and Kathleen Floyd
Laurie Fritzinger
Michael and Heather Gannon
Jackie and Robert Garofalo
General Mills Foundation
Peter Gerenz
Joseph and Pamela Germ
Rodrigo and Joan Gonzalez
H.B. Fuller Company Foundation
Maureen Haggerty
Mary Hajlo Erickson
Jack and Nina Hardenbrook
Mark and Susan Harrold
Jennifer Kubal Heddle
Jeff and Marietta Helmeke
Helping Kids Achieve Their Goals
Katherine Hinderscheid
Rebecca Hoffman
Mr. Mark Holland
Mr. and Mrs. Robert E. Holler
HotSkills Inc.
Bruce & Pat Huber Donor Advised Fund of the Catholic Community Foundation
Shawn and Allen Ilgen
Mr. and Mrs. James M. Johnson
Dr. Blake Johnson, MD, FACR
Jim and Carrie Just
Kurt and Kathleen Kaiser
Paul and Kathryn Reitenberger
Kevin and Jane Rich
Duane J. Rivard
The Rizzardi Family
Jennifer and Kevin Roach
John and Kathleen Rooney Char-itable Fund #6, a Donor Advised Fund of Renaissance Charitable Foundation
Mr. Michael Rooney
Benjamin and Genelle Ross
John V. Russell
Travis and Christa Rymal
Saint Therese
Tryg and Paula Sarsland
Bud and Kaye Sauer

Mark and Tracy Lindemer,

Lindey's Prime Steak House
Dan and Lisa Mauer
Michael Mazur and Brigid M. O'Malley
Maureen McDonough and Roger Kapsner
Terri McEnaney, Rodney and Marcia Bailey Family, a donor advised fund of Fidelity Charitable
Kathryn and Scott Mensen
Bruce A. Miller
Monarch Bus Service, Inc./Minnesota Coaches, Inc.
Mary M. Morelli
Daniel J. Mulvaney
Mark and Suzanne Myers
Elinor and Tom Nicklawске
Jane (Schiltgen) and Thomas Nikolas
Tim and Kelley Norman
Steve and Ann Ogren
David and Barbara Olson
Alex and Carla Onsomu
James Kwaku Oppong
Rose and Bill Perpich
Jane Persoon
Larry and Melissa (Schwartz) Peterson
Paul and Carolyn Petronack
Platinum Bank
Jerry and Judy Quinlan
Sean O. and Mary Dolan Regan
David and Rita (Horwath) Reif
Paul and Kathryn Reitenberger
Kevin and Jane Rich
Duane J. Rivard
The Rizzardi Family
Jennifer and Kevin Roach
John and Kathleen Rooney Char-itable Fund #6, a Donor Advised Fund of Renaissance Charitable Foundation
Mr. Michael Rooney
Benjamin and Genelle Ross
John V. Russell
Travis and Christa Rymal
Saint Therese
Tryg and Paula Sarsland
Bud and Kaye Sauer

Patrick and Ann Sauer

Patrick and Angela Schafhauser
Kurt and Jane Schellhas
Mr. Lawrence M. Schultz
Jeff and Joanne Schwartz
John and Patricia (Melander) Schwietz
Mark Skubic
Sletten & Brettin Orthodontics
Dan and Jen Sletten, DDS
Joel and LeeAnn Slomkowski
Jay and Diana Smith
Emmy and Greg Springer
St. Joseph's Academy Alumnae Association
St. Paul's Monastery
Dan and Sandy Steichen
Timothy and Christine Steigauf
James and Catherine Stevenson
Sharon T. Stevson
Sean and Maria Stinnett
Mr. William Strub
Marcus and Maura Tanabe
The Harley Companies, Inc.
Tillges Certified Orthotic Pros-thetic, Inc.
Tinucci Family Charitable Fund of the Catholic Community Foundation
Glen and Amy Tischler
Shannon and David Tjernlund
John Tobin and Janine Chevalier
Elizabeth and Ross Tollefsen
Dana and Jim Tonrey
John F. Trudeau
Thomas and Megan Tucci
Stephanie and Stephen Varley
Jeffrey Voeller
Wyatt Stahl & Lynnett V. Stahl
Laura and Raphael Wallander
Richard N. Walz Jr. and Jane (Sowada) Walz
Carla Warner
Lorajeane and Robert Weitnauer
Teresa Wells
Wells Fargo Foundation Educa-tional Matching Gift Program
Heidi and Todd Westby
Lorraine & Robert Wilson Estate

2015-2016 CONTRIBUTORS



Martin Wings Bill and Jill Wold Lesley and Dwayne Wolterstorff John and Rocky Yarusso Chris and Jessica Zupfer	John and Sarah Garrett Tracy Gist Ken and Debbie Godbout Gott To LAX Initiative, Inc. George, Carol and Gabrielle Grau Maureen and Chuck Gregg HAB, Inc. Richard and Marcella Hall Angela and Kirk Hauge Caitlin Hawthorne Marissa and Jay Henthorne Jessica and Sam Hickman Anthony C. Hoffman Amy and Jerry Hope Bill Hudachek Jackie and Jerry Jansen Christine Kaiser, M.D. Brian Karschnia Bruce and Leann Kaufenberg Bruce and Mary Kimlinger Jodi and Brad Klepac Mark S. and Barbara Klosner Cindy Marty Korman & Rich Korman Dorothy Kreimer Rand and Roger Rand Theodore Krize Kevin and Maureen Treacy Lahr Jacquie and Mike LaMonica Laurel Lapore Jennifer and Benjamin Lavine Robert Lawrence III and Linda Radford Lawrence Mike and Mary Lynn Jim and Julie Maietta Mario and Kay Mariani Mark A. Pursley Memorial Foundation Daniel R. Miller Sherri and Michael Miske Tom and Judy Mogren Jay and Michelle Montpetit Mr. and Mrs. Robert M. Moore Matt and Michele Mountain Bill and Jennifer Mullin Nova Classical Academy Jean Anne Nowak Mr. Kris Oftedahl Sara Grosse Olson Scovill Joshua Otto Thomas and Kathleen Peller Neil and Elizabeth Phelan Gregory and Reva Denk Dan and Jeanne Dolan Donatelli's Janel and Steve Donegan Jim and Kelly Donnelly John and Ada Dow, Jr. Amy Dumond Kottke and Derek Kottke Eli Litty and Company Founda- tion, Inc. Mr. and Mrs. William Fabian David and Denise Faust Mr. and Mrs. Robert Florence Mary and James Fredricksen	Jonathan and Carol Schmeltz Matt and Carrie Schroefer Lew G. and Diane L. (Meis) Schuweiler Mr. and Mrs. James A. Seifert David M. Senness, CPA Martin and Jodi Spannbauer Liz Stejskal & Tim Whisler Suburban Floor Covering Helen and Kevin Sutton Colleen and Donald Theissen Ken and Mary Ann Thelen Thomson Reuters - West Corporation Mark J. Tollefsbol Travelers Community Con- nections William C. Tronsen TurnKey Corrections Mr. and Mrs. John Twohy Anthony and Christine Vander Heyden Raymond and Teresa Voelker Stephen and Robyn Wallner Steven Werden Brian and Elizabeth Westerhaus Keith and Colleen Wieteki Andrew and Connie Woessner Pamela and Gary Wolf Angela and Vincent Wright Kurt and Diane Zillely George and Amy Zortman	Chandler and Anjie Cayot Jim and Donna Chicone Clare and William Cizek Cheryl Collyard Colestock LeeAnn and Lou Danna Eugene and Mary Dario Todd and Julie Davies Mrs. Kathleen A. Drabik and Mr. Casimir R. Drabik Lance and Nancy DuMond Jenna Konecny Dwyer, Friends of Katie (Gherty) McCabe in loving memory of Terry Gherty The Juba and Eastman Family Richard and Phyllis Ehlers William and Catherine Englund Robert and Amy Etten Lori and Steven Fleischhacker Donald Flentje Bernard and Jessica Francis Mike and Judith Franey Lloyd and Doris Frank Mr. and Mrs. Robert Gerenz Mary E. Giannini Rick and Elisa Granger Clarissa and Matthew Green Candace Gritzmacher Mary Ann (Picard) Gruba David and Kirsten Grupa Mr. and Mrs. Carlos Gutierrez Paul and Claudia Haas Victoria (Buchholz) Halvorsen Gerald and Sonja Hanggi John and Carrie Hansen Mr. and Mrs. Pat Haugh James A. Hayne Steve and Ann Heimerman Tonia and Peter Helgeson John Heller Alicia M. Hensler Dan Hermes Joe and Rita Hermes Joseph and Cindy Hinrichs James and Sara Hoffman Louis C. Hoffman Daniel Hofstetter Richard C. Hogan Robert and Michelle Holschuh Simmons Mary and Lee Hunt Indian Hills Golf Club Michael and Bonnie Jellinek Kelsey Hoversten Jensen David and Patricia Johnson Jennifer L. Johnson Christine and Keith Jones Dr. and Mrs. Robert W. Jones Julianne Jorissen Keith and Ceil Jung Jack and Jeanne Jungbauer Gary and Monica Kasmirski Henry Katzmarek Gregory Keller '66 and Kathleen Wecker Keller '69 Mr. Scott Kelly Tom and Lori Kennedy Steven Carrier	Mrs. Bonne Kluge Knights of Columbus/Fr. William P. O'Reilly Mr. Michael J. Kochevar Debra and Richard Kranz Kathy and Bill Krause Mike Kuehn Steven and Mary Kuehn Mark and Linda Lancot Barbara (Hoheisel) & Phillip LaPolice Barbara Larrive Mr. and Mrs. Dale Larson Jessica and Dean Larson Ms. Althea Lentsch Bob and Kathy Malek John Morgan Markoe Angela and Michael Mattingly Anne McCulloch Malcolm McDonald and Susan Ustipak Medical Metrics Mary and Victor Meysenburg Michelle Mitsch Karring Tyler Moan and Hayley Irene Sheldon Nancy L. Moberg Brian K. Mogren Bruce Mogren Lisa (Schuweiler) '96 and Jordan Montgomery Patricia Morrow Mr. and Mrs. Richard Munson Katherine Taylor Munster Robert J. and M. Emily Nieters Jeff and Carol Notto Doreen O'Brien and Jeffrey Engel James and Judy O'Donnell Sally O'Keefe Kathleen Kotula Olson Mr. and Mrs. Donald E. O'Malley Jennifer Painter Personal Property Solutions Florence Petersen Darlene Peterson Kelly Peterson John Pierce and Pat Barry Mr. Nick Pitera Janet A. Prodoehl Hal and Angela Propp Daniel A. Quehl RBC Foundation - USA Casey and Bridget Regan Bev Ricks Jim and Denise Roehrenbach Mark Rogers Ms. Mary Dean Steve and Doris Schmaltz Ryan Shanley Peg Shields Lindlof Bill and Barb Sonntag Gary and Monica Kasmirski Henry Katzmarek Gregory Keller '66 and Kathleen Wecker Keller '69 Mr. Scott Kelly Tom and Lori Kennedy John and Nan Steger	Roman Stepchuk Nancy Fuller Studiner Nancy Sykes Jerry and Kristi Szpotk Mr. and Mrs. Ted Tarsa Michael and Mary Claire Theis Al and Koreen Theisen Todd and Cindy Thompson Brian and Kelly Tischler Lee and Kathy Tischler TSE Inc. Richard and Barbara Unger Lisa and Darcy Valentine Peter and Kimberly Venuta Deborah Vranyes Kurt and Cynthia Wachtler Frances Walz James W. Weidner Mary Jo and Paul Wertzler Phil and Mary Widenstrom Felicia and Eric Widi Donna M. Wiederkehr Roger and Farron Wings Shawn and Angela Woessner David and Ann Wolfe Kayla A. Yarusso Joseph and Holly Zoborowski Mary Lee and William Zrust	PIONEER CIRCLE Gifts of \$100-\$249 Ms. Angeline S. Abbott James and Jill Ackley Marie Aguirre Ms. Elizabeth C. Ahles Barry and Patti Alverman Julie K. Anderson Mary Ann Anderson Stan Anderson Anonymous-Truist ACH Eileen Arcilla Tricia Kasckert Armstrong James Arnold and Anne Weiss Lisa and Troy Axelson Randy and Heather Bacchus BAE Systems Matching Gift Plan Mr. and Mrs. Daniel Barrett, Sr. Erv and Bev Barrett Maureen "Marnie" Barrett Pat Barrett Mr. William Bartolic Baxter International Foundation Robin and Luke Bearth Jeffrey Belair Julie Thalhuber Bendel Joseph and Cheryl Bennett Al and Bev Berchem Mark and Mary Berchem Dr. Kent Berg Denis and Laurie Biagini Edward Black Kristine Black and Jack O'Neal Don Blake Gary and Jean Blinkhorn, In honor of Bryce & Haylee	Blinkhorn Bill and Barb Boehnlein JoAnn Schumacher Boettcher and Thomas Boettcher Kristine Lange Boland Walter J. Bonfe Chad and Alicia Boreen Rebecca J. Borgerson Mr. and Mrs. Henry P. Boudreau Tony and Carrie Boyer James H. Bradshaw Julie Wolter Brashat Howard and Jennifer Bremer Marilyn Brennan James and Julie Broshat Richard and Teresa Bruckner Edward M. and Mary Ann Bruno Amy Ann Bubbash Storer Christine and Shane Buntje Mr. and Mrs. John Burns, Jr. Dick and Ann Butala Father Michael Byron Cafe Zupas Deanne and Chris Campbell Thomas and Mary Campbell John and Susan Capechchi Mr. and Mrs. Dale Carmichael Brother Francis Carr Tim and Vicki Carvelli Bobby and Carol Casci Mr. Dennis Casey Dan Cermak Donna M. Chapp John and Jean Charpentier Benjamin and Molly Cirillo Mary Poppert and Rob Colbert Mr. and Mrs. Jim Collova Mr. Mark Collova Peggy Leko Colombo Travis Colsen Mr. Stephen Conor Bonnie L. Conroy Ken and Julie Conway Jeanne Corbett Matt Corbett JoAnn Cotroneo Steve and Kim Crandall Patrick and Joan Crowley Lisa Crum Amy Cuadrado Strub and William Strub Mary (Quinn) Daleiden Jim Damato Gary and Julie Davis Gary and Marilyn Davis Ms. Mary Dean Michelle and John Deering Mary Schiltgen Delaney and Joseph Delaney, Sr. Mary L. Dellenbach Richard and Sheryl Dentinger Sharon Giem Dewitz Elliott and Sarah "Sally" Dick Joan Frenning Dillon Sharon Gonsoski Dimond Bo Dolan	Catie Dolan Daniel Dolan Ms. Alexandra N. Donegan Ms. Samantha P. Donegan Jane Doorak Michael and Annette Doroschak Jon and Becky (Pearson) Dostal Richard and Leona Dostal Regina O. Dow Patrick and Nancy Dowd Gerald Drinane Kathleen Driscoll Hellen Jill and Kevin Edelman Caroline Egan Kathryn Egan Jim and Joyce Egan Judy Eger, In memory of Don J. Eger Tony and Summer Eger Mr. Ross M. Eib Barbara Schmaltz Eiferman and Ken Eiferman Michael and Shannon Enright Christopher Hassel Mr. James Hasselman Mr. and Mrs. Steven Hauser Steven J. Hayne Ms. Emily K. Hazelton Louise and Kevin Head Evan Myers Scholarship Ms. Denise Evert Louise M. Ewald J. C. Exley-Zimmerman Matt and Katy Fairbanks Colby J. Falk Helen and Malcolm Faust Patrick and Dona Rae Faust Charles and Anna (Dandrea) Fehring Patricia A. Henriksen Ms. Erin Herman Leo Hermes, III Renee Heutmaker Monica Hilger Robert Hilpisch Kim and John Hinton Blandine A. Hogan Mike Hogan Nancy Holm Callas Bill and Sally Hoppe Steve and Becky Hoppert Rick and Colleen Horeish Molly Treacy Hottinger and George Hottinger Tom and Judy House Beth Pflugi Hvass Jennifer A. Igo Tom and Candyce Ihnot Mary and Michael Janssen Jim Hobart Construction, LLC James Joa Bianca Johnson Janet A. and Les H. Johnson Patricia A. Johnson William and Ruth Johnson Mary and Eric Johnston Edwin and Ruth Jones Janet M. Jones James and Nancy Lee Jonza	Adam and Katie Goehner Terry and Roger Goerke Ruth Judd Ms. Nancy J. Goetzke Jason and Gina Gorman Robert and Debbie Grasley Cynthia and James Greenfield Paul and Leslie Gregg Barbara and Jerry Griffith Chris Griffith-Dittberner and Joel Dittberner Jim Grogowski & Cindy Bongard Grogowski Peggie Grose Mr. and Mrs. Robert Grundtner The Gutknecht Family Mary Dee Hacker Nancy Hajlo Johnson & Gregory Johnson Michelle Halley, C.P.A. Monica Hesse Hamer Patricia Borgstrom Hanscom and David Hanscom Phyllis E. Hanson Christopher Hassel Mr. James Hasselman Mr. and Mrs. Steven Hauser Steven J. Hayne Ms. Emily K. Hazelton Louise and Kevin Head Evan Myers Scholarship Ms. Denise Evert Louise M. Ewald J. C. Exley-Zimmerman Matt and Katy Fairbanks Colby J. Falk Helen and Malcolm Faust Patrick and Dona Rae Faust Charles and Anna (Dandrea) Fehring Patricia A. Henriksen Ms. Erin Herman Leo Hermes, III Renee Heutmaker Monica Hilger Robert Hilpisch Kim and John Hinton Blandine A. Hogan Mike Hogan Nancy Holm Callas Bill and Sally Hoppe Steve and Becky Hoppert Rick and Colleen Horeish Molly Treacy Hottinger and George Hottinger Tom and Judy House Beth Pflugi Hvass Jennifer A. Igo Tom and Candyce Ihnot Mary and Michael Janssen Jim Hobart Construction, LLC James Joa Bianca Johnson Janet A. and Les H. Johnson Patricia A. Johnson William and Ruth Johnson Mary and Eric Johnston Edwin and Ruth Jones Janet M. Jones James and Nancy Lee Jonza	Grace and John Jorissen Mr. Timothy S. Josephson Ruth Judd Mr. Walter Jungbauer Michael Junker Robin and Paul Keenan Kell Dental Arts Mr. and Mrs. Peter J. Keller Ms. Martina Kelly and Mr. Eric Morud Jeannie Bykowski Kenevan and Matthew Kenevan George and Tess Khoury Ms. Laura J. Kingston Tom and MaryLou Kinsella Mark J. Kleinschmidt Rick and Courtney Klosner Lawrence and Kathleen Koral Todd and Patty Koran Jeanine Schwietz Korf Diane Kubal Bonita K. Kuslich Kenneth LaChance Robb and Polly LaChappelle Natalie J. Lais Gerald and Ginette L'Allier Julia Lange Steve and Marge (Voigt) Lange '68 Jack and Audrey Lannon Geoffrey and Stephanie Laramy James and Rachel Larson Mr. and Mrs. Larry Laughlin Roger and Shirley LaVoi Victor and Susan Lee David and Mary Libra Dale and Linda Lieb Anne and Mark Lienemann Ms. Viola M. Lincowski Erin and Tom Lisle Francis Loeffler Doug and Jill Long Devoney Looser Wanda Pope Lorsung Doris LaCoursiere Lueneburg Mrs. Nancy Lynch Mr. and Mrs. Darrell Lynn Tim and Suzanne Mackley Ray and Pat Maertens Susan F. Maier Bob and Pat Maietta Kevin and Tara Malley Donald R. Mandel Linda Manders Angela J. Mariani Ms. Elizabeth L. Marin Garry and Anna O'Hara Randy and Kristi Olinger David Olson Patrick H. O'Malley and Jody (Drace) O'Malley Elizabeth O'Mara Kevin and Kristi Otto Paul and Lynn Otto Terrence and Jeanne Palmer Gloria J. McDonough Mr. and Mrs. Thomas Mc-	Donough Carol M. McElroy Kevin and Susan McElvain Mr. and Mrs. Bryan J. McGinnis Michael and Eileen McGurran Miriam E. McGurran Linda and Tim McMahon Kevin McMann Kathy Wendel McManus Richard McNamara Mary McPherson Sean and Heather (Dario) McTeague Mrs. Deloris Meadows Loyal and Glenda Meech Barbara and Barry Melchior Lynn and David Meyer, parents of Charlie Meyer, 2012 Gerald Meyer Donald and Marie Meysembourg Mr. and Mrs. Clayton E. Michaels Mr. John Michel and Dr. H. Berit Midelfort JoAnn Michna Mrs. Catherine E. Miettunen and Mr. James P. Miettunen Milewski Family Keith Mogren Larry and Sharon Monroe Joel and Judy Montpetit Sharon Thoele Moore Mr. James Morelli Peg McDonough Moreno William and Julie Moyer Bev Kaeder Mrozinski, Class of '62 Matt Mulvaney Mr. and Mrs. Thomas J. Murphy Nativity Men's Club Kristina and Steven Neubauer Karen and David Newell Earl Newton Steven and Juliane Nilsson John and Angela Nolde Marianne Nolde Michael Noonan '67 Karen and Gerald Norman Carolyn Koleske and Syd Normington Karl Nyhus Beverly Carr O'Brien Lisa and Jim O'Brien Bob and Molly (Marilyn Holly) O'Dea Paul Odegard Eve O'Gary Garry and Anna O'Hara Randy and Kristi Olinger David Olson Patrick H. O'Malley and Jody (Drace) O'Malley Elizabeth O'Mara Kevin and Kristi Otto Paul and Lynn Otto Terrence and Jeanne Palmer Gloria J. McDonough Mr. and Mrs. Thomas Mc-	Patterson Melissa Pearson Norman and Mary Pederson Patricia Clintsman Peichel and Stephen Peichel Diane M. Peltzer Mr. and Mrs. Dale Perrault Mr. Andy Persby Mr. and Mrs. Barry Persby Gerry and Jackie Peters Hans and Lana Petersen Frank and Mary Petron Kathryn J. Petron Jack Petty and Karen Albertson Gary and Marcia Phillips Brady and Lisa Pierce Kathleen Lasar Plapp Roger and Doris Plessel John and Kathleen Rooney Charitable Fund #6, A Donor Advised Fund of Renaissance Charitable Foundation Roseanne Silva Pam Simanski Meghan Simmet Warren and Barbara Simmons Fred A. Simon David Smith Jeffrey J. Smith Jack and Barbara (Smith) Reis Robert and Jennifer Snyder Pat McKeown Soderbeck '62 Robert and Jackie Sorenson Gary and Julie Sova Al and Gayle Spannbauer Spartan Promotional Group, Inc. John and Mary Kay Sprangers St. Thomas the Apostle Parish Gary J. & Susan M. (Watson) Stadler Gary G. Stanoch Amy and Don Stehler Don and Mary Lou Stephani Lee and Maggie Stoerzinger Robert Stoven Jason Sturm James H. and Pamela Sullivan Bob Sullivan Colin and Mirjam Sultan Cleon and Pat Sundby Super 8 Motel-Bemidji Dinah L. Swain Sean and Hilary Sweeney Donald Talbot and Margaret (Pepin) Talbot Class of '63 Michael Tchida and Mary DuPlessis-Tchida Mr. and Mrs. Robert C. Tefft Texas Instruments Trista Vucetich Anderson Jane Wold Wagemaker John and Lynne Walfoort James and Wynona Warner Stephen Weber Wendy Weber Kenneally Scott and Jane Weik Donald and Dianne Weinberger Gerard J. Weingartner D.D.S. James and Janice Weingartz Mark and Deborah Wheeler Ted and Judy Whitney Thomas and Barbara Wiberg Mr. and Mrs. David Wilhelmly Stephen J. Willard Woodie Wilson '65 Warren and Barbara Simmons Fred A. Simon David Smith Jeffrey J. Smith Jack and Barbara (Smith) Reis Robert and Jennifer Snyder Pat McKeown Soderbeck '62 Robert and Jackie Sorenson Gary and Julie Sova Al and Gayle Spannbauer Spartan Promotional Group, Inc. John and Mary Kay Sprangers St. Thomas the Apostle Parish Gary J. & Susan M. (Watson) Stadler Gary G. Stanoch Amy and Don Stehler Don and Mary Lou Stephani Lee and Maggie Stoerzinger Robert Stoven Jason Sturm James H. and Pamela Sullivan Bob Sullivan Colin and Mirjam Sultan Cleon and Pat Sundby Super 8 Motel-Bemidji Dinah L. Swain Sean and Hilary Sweeney Donald Talbot and Margaret (Pepin) Talbot Class of '63 Michael Tchida and Mary DuPlessis-Tchida Mr. and Mrs. Robert C. Tefft Texas Instruments Trista Vucetich Anderson Jane Wold Wagemaker John and Lynne Walfoort James and Wynona Warner Stephen Weber Wendy Weber Kenneally Scott and Jane Weik Donald and Dianne Weinberger Gerard J. Weingartner D.D.S. James and Janice Weingartz Mark and Deborah Wheeler Ted and Judy Whitney Thomas and Barbara Wiberg Mr. and Mrs. David Wilhelmly Stephen J. Willard Woodie Wilson '65 Warren and Barbara Simmons Fred A. Simon David Smith Jeffrey J. Smith Jack and Barbara (Smith) Reis Robert and Jennifer Snyder Pat McKeown Soderbeck '62 Robert and Jackie Sorenson Gary and Julie Sova Al and Gayle Spannbauer Spartan Promotional Group, Inc. John and Mary Kay Sprangers St. Thomas the Apostle Parish Gary J. & Susan M. (Watson) Stadler Gary G. Stanoch Amy and Don Stehler Don and Mary Lou Stephani Lee and Maggie Stoerzinger Robert Stoven Jason Sturm James H. and Pamela Sullivan Bob Sullivan Colin and Mirjam Sultan Cleon and Pat Sundby Super 8 Motel-Bemidji Dinah L. Swain Sean and Hilary Sweeney Donald Talbot and Margaret (Pepin) Talbot Class of '63 Michael Tchida and Mary DuPlessis-Tchida Mr. and Mrs. Robert C. Tefft Texas Instruments Trista Vucetich Anderson Jane Wold Wagemaker John and Lynne Walfoort James and Wynona Warner Stephen Weber Wendy Weber Kenneally Scott and Jane Weik Donald and Dianne Weinberger Gerard J. Weingartner D.D.S. James and Janice Weingartz Mark and Deborah Wheeler Ted and Judy Whitney Thomas and Barbara Wiberg Mr. and Mrs. David Wilhelmly Stephen J. Willard Woodie Wilson '65 Warren and Barbara Simmons Fred A. Simon David Smith Jeffrey J. Smith Jack and Barbara (Smith) Reis Robert and Jennifer Snyder Pat McKeown Soderbeck '62 Robert and Jackie Sorenson Gary and Julie Sova Al and Gayle Spannbauer Spartan Promotional Group, Inc. John and Mary Kay Sprangers St. Thomas the Apostle Parish Gary J. & Susan M. (Watson) Stadler Gary G. Stanoch Amy and Don Stehler Don and Mary Lou Stephani Lee and Maggie Stoerzinger Robert Stoven Jason Sturm James H. and Pamela Sullivan Bob Sullivan Colin and Mirjam Sultan Cleon and Pat Sundby Super 8 Motel-Bemidji Dinah L. Swain Sean and Hilary Sweeney Donald Talbot and Margaret (Pepin) Talbot Class of '63 Michael Tchida and Mary DuPlessis-Tchida Mr. and Mrs. Robert C. Tefft Texas Instruments Trista Vucetich Anderson Jane Wold Wagemaker John and Lynne Walfoort James and Wynona Warner Stephen Weber Wendy Weber Kenneally Scott and Jane Weik Donald and Dianne Weinberger Gerard J. Weingartner D.D.S. James and Janice Weingartz Mark and Deborah Wheeler Ted and Judy Whitney Thomas and Barbara Wiberg Mr. and Mrs. David Wilhelmly Stephen J. Willard Woodie Wilson '65 Warren and Barbara Simmons Fred A. Simon David Smith Jeffrey J. Smith Jack and Barbara (Smith) Reis Robert and Jennifer Snyder Pat McKeown Soderbeck '62 Robert and Jackie Sorenson Gary and Julie Sova Al and Gayle Spannbauer Spartan Promotional Group, Inc. John and Mary Kay Sprangers St. Thomas the Apostle Parish Gary J. & Susan M. (Watson) Stadler Gary G. Stanoch Amy and Don Stehler Don and Mary Lou Stephani Lee and Maggie Stoerzinger Robert Stoven Jason Sturm James H. and Pamela Sullivan Bob Sullivan Colin and Mirjam Sultan Cleon and Pat Sundby Super 8 Motel-Bemidji Dinah L. Swain Sean and Hilary Sweeney Donald Talbot and Margaret (Pepin) Talbot Class of '63 Michael Tchida and Mary DuPlessis-Tchida Mr. and Mrs. Robert C. Tefft Texas Instruments Trista Vucetich Anderson Jane Wold Wagemaker John and Lynne Walfoort James and Wynona Warner Stephen Weber Wendy Weber Kenneally Scott and Jane Weik Donald and Dianne Weinberger Gerard J. Weingartner D.D.S. James and Janice Weingartz Mark and Deborah Wheeler Ted and Judy Whitney Thomas and Barbara Wiberg Mr. and Mrs. David Wilhelmly Stephen J. Willard Woodie Wilson '65 Warren and Barbara Simmons Fred A. Simon David Smith Jeffrey J. Smith Jack and Barbara (Smith) Reis Robert and Jennifer Snyder Pat McKeown Soderbeck '62 Robert and Jackie Sorenson Gary and Julie Sova Al and Gayle Spannbauer Spartan Promotional Group, Inc. John and Mary Kay Sprangers St. Thomas the Apostle Parish Gary J. & Susan M. (Watson) Stadler Gary G. Stanoch Amy and Don Stehler Don and Mary Lou Stephani Lee and Maggie Stoerzinger Robert Stoven Jason Sturm James H. and Pamela Sullivan Bob Sullivan Colin and Mirjam Sultan Cleon and Pat Sundby Super 8 Motel-Bemidji Dinah L. Swain Sean and Hilary Sweeney Donald Talbot and Margaret (Pepin) Talbot Class of '63 Michael Tchida and Mary DuPlessis-Tchida Mr. and Mrs. Robert C. Tefft Texas Instruments Trista Vucetich Anderson Jane Wold Wagemaker John and Lynne Walfoort James and Wynona Warner Stephen Weber Wendy Weber Kenneally Scott and Jane Weik Donald and Dianne Weinberger Gerard J. Weingartner D.D.S. James and Janice Weingartz Mark and Deborah Wheeler Ted and Judy Whitney Thomas and Barbara Wiberg Mr. and Mrs. David Wilhelmly Stephen J. Willard Woodie Wilson '65 Warren and Barbara Simmons Fred A. Simon David Smith Jeffrey J. Smith Jack and Barbara (Smith) Reis Robert and Jennifer Snyder Pat McKeown Soderbeck '62 Robert and Jackie Sorenson Gary and Julie Sova Al and Gayle Spannbauer Spartan Promotional Group, Inc. John and Mary Kay Sprangers St. Thomas the Apostle Parish Gary J. & Susan M. (Watson) Stadler Gary G. Stanoch Amy and Don Stehler Don and Mary Lou Stephani Lee and Maggie Stoerzinger Robert Stoven Jason Sturm James H. and Pamela Sullivan Bob Sullivan Colin and Mirjam Sultan Cleon and Pat Sundby Super 8 Motel-Bemidji Dinah L. Swain Sean and Hilary Sweeney Donald Talbot and Margaret (Pepin) Talbot Class of '63 Michael Tchida and Mary DuPlessis-Tchida Mr. and Mrs. Robert C. Tefft Texas Instruments Trista Vucetich Anderson Jane Wold Wagemaker John and Lynne Walfoort James and Wynona Warner Stephen Weber Wendy Weber Kenneally Scott and Jane Weik Donald and Dianne Weinberger Gerard J. Weingartner D.D.S. James and Janice Weingartz Mark and Deborah Wheeler Ted and Judy Whitney Thomas and Barbara Wiberg Mr. and Mrs. David Wilhelmly Stephen J. Willard Woodie Wilson '65 Warren and Barbara Simmons Fred A. Simon David Smith Jeffrey J. Smith Jack and Barbara (Smith) Reis Robert and Jennifer Snyder Pat McKeown Soderbeck '62 Robert and Jackie Sorenson Gary and Julie Sova Al and Gayle Spannbauer Spartan Promotional Group, Inc. John and Mary Kay Sprangers St. Thomas the Apostle Parish Gary J. & Susan M. (Watson) Stadler Gary G. Stanoch Amy and Don Stehler Don and Mary Lou Stephani Lee and Maggie Stoerzinger Robert Stoven Jason Sturm James H. and Pamela Sullivan Bob Sullivan Colin and Mirjam Sultan Cleon and Pat Sundby Super 8 Motel-Bemidji Dinah L. Swain Sean and Hilary Sweeney Donald Talbot and Margaret (Pepin) Talbot Class of '63 Michael Tchida and Mary DuPlessis-Tchida Mr. and Mrs. Robert C. Tefft Texas Instruments Trista Vucetich Anderson Jane Wold Wagemaker John and Lynne Walfoort James and Wynona Warner Stephen Weber Wendy Weber Kenneally Scott and Jane Weik Donald and Dianne Weinberger Gerard J. Weingartner D.D.S. James and Janice Weingartz Mark and Deborah Wheeler Ted and Judy Whitney Thomas and Barbara Wiberg Mr. and Mrs. David Wilhelmly Stephen J. Willard Woodie Wilson '65 Warren and Barbara Simmons Fred A. Simon David Smith Jeffrey J. Smith Jack and Barbara (Smith) Reis Robert and Jennifer Snyder Pat McKeown Soderbeck '62 Robert and Jackie Sorenson Gary and Julie Sova Al and Gayle Spannbauer Spartan Promotional Group, Inc. John and Mary Kay Sprangers St. Thomas the Apostle Parish Gary J. & Susan M. (Watson) Stadler Gary G. Stanoch Amy and Don Stehler Don and Mary Lou Stephani Lee and Maggie Stoerzinger Robert Stoven Jason Sturm James H. and Pamela Sullivan Bob Sullivan Colin and Mirjam Sultan Cleon and Pat Sundby Super 8 Motel-Bemidji Dinah L. Swain Sean and Hilary Sweeney Donald Talbot and Margaret (Pepin) Talbot Class of '63 Michael Tchida and Mary DuPlessis-Tchida Mr. and Mrs. Robert C. Tefft Texas Instruments Trista Vucetich Anderson Jane Wold Wagemaker John and Lynne Walfoort James and Wynona Warner Stephen Weber Wendy Weber Kenneally Scott and Jane Weik Donald and Dianne Weinberger Gerard J. Weingartner D.D.S. James and Janice Weingartz Mark and Deborah Wheeler Ted and Judy Whitney Thomas and Barbara Wiberg Mr. and Mrs. David Wilhelmly Stephen J. Willard Woodie Wilson '65 Warren and Barbara Simmons Fred A. Simon David Smith Jeffrey J. Smith Jack and Barbara (Smith) Reis Robert and Jennifer Snyder Pat McKeown Soderbeck '62 Robert and Jackie Sorenson Gary and Julie Sova Al and Gayle Spannbauer Spartan Promotional Group, Inc. John and Mary Kay Sprangers St. Thomas the Apostle Parish Gary J. & Susan M. (Watson) Stadler Gary G. Stanoch Amy and Don Stehler Don and Mary Lou Stephani Lee and Maggie Stoerzinger Robert Stoven Jason Sturm James H. and Pamela Sullivan Bob Sullivan Colin and Mirjam Sultan Cleon and Pat Sundby Super 8 Motel-Bemidji Dinah L. Swain Sean and Hilary Sweeney Donald Talbot and Margaret (Pepin) Talbot Class of '63 Michael Tchida and Mary DuPlessis-Tchida Mr. and Mrs. Robert C. Tefft Texas Instruments Trista Vucetich Anderson Jane Wold Wagemaker John and Lynne Walfoort James and Wynona Warner Stephen Weber Wendy Weber Kenneally Scott and Jane Weik Donald and Dianne Weinberger Gerard J. Weingartner D.D.S. James and Janice Weingartz Mark and Deborah Wheeler Ted and Judy Whitney Thomas and Barbara Wiberg Mr. and Mrs. David Wilhelmly Stephen J. Willard Woodie Wilson '65 Warren and Barbara Simmons Fred A. Simon David Smith Jeffrey J. Smith Jack and Barbara (Smith) Reis Robert and Jennifer Snyder Pat McKeown Soderbeck '62 Robert and Jackie Sorenson Gary and Julie Sova Al and Gayle Spannbauer Spartan Promotional Group, Inc. John and Mary Kay Sprangers St. Thomas the Apostle Parish Gary J. & Susan M. (Watson) Stadler Gary G. Stanoch Amy and Don Stehler Don and Mary Lou Stephani Lee and Maggie Stoerzinger Robert Stoven Jason Sturm James H. and Pamela Sullivan Bob Sullivan Colin and Mirjam Sultan Cleon and Pat Sundby Super 8 Motel-Bemidji Dinah L. Swain Sean and Hilary Sweeney Donald Talbot and Margaret (Pepin) Talbot Class of '63 Michael Tchida and Mary DuPlessis-Tchida Mr. and Mrs. Robert C. Tefft Texas Instruments Trista Vucetich Anderson Jane Wold Wagemaker John and Lynne Walfoort James and Wynona Warner Stephen Weber Wendy Weber Kenneally Scott and Jane Weik Donald and Dianne Weinberger Gerard J. Weingartner D.D.S. James and Janice Weingartz Mark and Deborah Wheeler Ted and Judy Whitney Thomas and Barbara Wiberg Mr. and Mrs. David Wilhelmly Stephen J. Willard Woodie Wilson '65 Warren and Barbara Simmons Fred A. Simon David Smith Jeffrey J. Smith Jack and Barbara (Smith) Reis Robert and Jennifer Snyder Pat McKeown Soderbeck '62 Robert and Jackie Sorenson Gary and Julie Sova Al and Gayle Spannbauer Spartan Promotional Group, Inc. John and Mary Kay Sprangers St. Thomas the Apostle Parish Gary J. & Susan M. (Watson) Stadler Gary G. Stanoch Amy and Don Stehler Don and Mary Lou Stephani Lee and Maggie Stoerzinger Robert Stoven Jason Sturm James H. and Pamela Sullivan Bob Sullivan Colin and Mirjam Sultan Cleon and Pat Sundby Super 8 Motel-Bemidji Dinah L. Swain Sean and Hilary Sweeney Donald Talbot and Margaret (Pepin) Talbot Class of '63 Michael Tchida and Mary DuPlessis-Tchida Mr. and Mrs. Robert C. Tefft Texas Instruments Trista Vucetich Anderson Jane Wold Wagemaker John and Lynne Walfoort James and Wynona Warner Stephen Weber Wendy Weber Kenneally Scott and Jane Weik Donald and Dianne Weinberger Gerard J. Weingartner D.D.S. James and Janice Weingartz Mark and Deborah Wheeler Ted and Judy Whitney Thomas and Barbara Wiberg Mr. and Mrs. David Wilhelmly Stephen J. Willard Woodie Wilson '65 Warren and Barbara Simmons Fred A. Simon David Smith Jeffrey J. Smith Jack and Barbara (Smith) Reis Robert and Jennifer Snyder Pat McKeown Soderbeck '62 Robert and Jackie Sorenson Gary and Julie Sova Al and Gayle Spannbauer Spartan Promotional Group, Inc. John and Mary Kay Sprangers St. Thomas the Apostle Parish Gary J. & Susan M. (Watson) Stadler Gary G. Stanoch Amy and Don Stehler Don and Mary Lou Stephani Lee and Maggie Stoerzinger Robert Stoven Jason Sturm James H. and Pamela Sullivan Bob Sullivan Colin and Mirjam Sultan Cleon and Pat Sundby Super 8 Motel-Bemidji Dinah L. Swain Sean and Hilary Sweeney Donald Talbot and Margaret (Pepin) Talbot Class of '63 Michael Tchida and Mary DuPlessis-Tchida Mr. and Mrs. Robert C. Tefft Texas Instruments Trista Vucetich Anderson Jane Wold Wagemaker John and Lynne Walfoort James and Wynona Warner Stephen Weber Wendy Weber Kenneally Scott and Jane Weik Donald and Dianne Weinberger Gerard J. Weingartner D.D.S. James and Janice Weingartz Mark and Deborah Wheeler Ted and Judy Whitney Thomas and Barbara Wiberg Mr. and Mrs. David Wilhelmly Stephen J. Willard Woodie Wilson '65 Warren and Barbara Simmons Fred A. Simon David Smith Jeffrey J. Smith Jack and Barbara (Smith) Reis Robert and Jennifer Snyder Pat McKeown Soderbeck '62 Robert and Jackie Sorenson Gary and Julie Sova Al and Gayle Spannbauer Spartan Promotional Group, Inc. John and Mary Kay Sprangers St. Thomas the Apostle Parish Gary J. & Susan M. (Watson) Stadler Gary G. Stanoch Amy and Don Stehler Don and Mary Lou Stephani Lee and Maggie Stoerzinger Robert Stoven Jason Sturm James H. and Pamela Sullivan Bob Sullivan Colin and Mirjam Sultan Cleon and Pat Sundby Super 8 Motel-Bemidji Dinah L. Swain Sean and Hilary Sweeney Donald Talbot and Margaret (Pepin) Talbot Class of '63 Michael Tchida and Mary DuPlessis-Tchida Mr. and Mrs. Robert C. Tefft Texas Instruments Trista Vucetich Anderson Jane Wold Wagemaker John and Lynne Walfoort James and Wynona Warner Stephen Weber Wendy Weber Kenneally Scott and Jane Weik Donald and Dianne Weinberger Gerard J. Weingartner D.D.S. James and Janice Weingartz Mark and Deborah Wheeler Ted and Judy Whitney Thomas and Barbara Wiberg Mr. and Mrs. David Wilhelmly Stephen J. Willard Woodie Wilson '65 Warren and Barbara Simmons Fred A. Simon David Smith Jeffrey J. Smith Jack and Barbara (Smith) Reis Robert and Jennifer Snyder Pat McKeown Soderbeck '62 Robert and Jackie Sorenson Gary and Julie Sova Al and Gayle Spannbauer Spartan Promotional Group, Inc. John and Mary Kay Sprangers St. Thomas the Apostle Parish Gary J. & Susan M. (Watson) Stadler Gary G. Stanoch Amy and Don Stehler Don and Mary Lou Stephani Lee and Maggie Stoerzinger Robert Stoven Jason Sturm James H. and Pamela Sullivan Bob Sullivan Colin and Mirjam Sultan Cleon and Pat Sundby Super 8 Motel-Bemidji Dinah L. Swain Sean and Hilary Sweeney Donald Talbot and Margaret (Pepin) Talbot Class of '63 Michael Tchida and Mary DuPlessis-Tchida Mr. and Mrs. Robert C. Tefft Texas Instruments Trista Vucetich Anderson Jane Wold Wagemaker John and Lynne Walfoort James and Wynona Warner Stephen Weber Wendy Weber Kenneally Scott and Jane Weik Donald and Dianne Weinberger Gerard J. Weingartner D.D.S. James and Janice Weingartz Mark and Deborah Wheeler Ted and Judy Whitney Thomas and Barbara Wiberg Mr. and Mrs. David Wilhelmly Stephen J. Willard Woodie Wilson '65 Warren and Barbara Simmons Fred A. Simon David Smith Jeffrey J. Smith Jack and Barbara (Smith) Reis Robert and Jennifer Snyder Pat McKeown Soderbeck '62 Robert and Jackie Sorenson Gary and Julie Sova Al and Gayle Spannbauer Spartan Promotional Group, Inc. John and Mary Kay Sprangers St. Thomas the Apostle Parish Gary J. & Susan M. (Watson) Stadler Gary G. Stanoch Amy and Don Stehler Don and Mary Lou Stephani Lee and Maggie Stoerzinger Robert Stoven Jason Sturm James H. and Pamela Sullivan Bob Sullivan Colin and Mirjam Sultan Cleon and Pat Sundby Super 8 Motel-Bemidji Dinah L. Swain Sean and Hilary Sweeney Donald Talbot and Margaret (Pepin) Talbot Class of '63 Michael Tchida and Mary DuPlessis-Tchida Mr. and Mrs. Robert C. Tefft Texas Instruments Trista Vucetich Anderson Jane Wold Wagemaker John and Lynne Walfoort James and Wynona Warner Stephen Weber Wendy Weber Kenneally Scott and Jane Weik Donald and Dianne Weinberger Gerard J. Weingartner D.D.S. James and Janice Weingartz Mark and Deborah Wheeler Ted and Judy Whitney Thomas and Barbara Wiberg Mr. and Mrs. David Wilhelmly Stephen J. Willard Woodie Wilson '65 Warren and Barbara Simmons Fred A. Simon David Smith Jeffrey J. Smith Jack and Barbara (Smith) Reis Robert and Jennifer Snyder Pat McKeown Soderbeck '62 Robert and Jackie Sorenson Gary and Julie Sova Al and Gayle Spannbauer Spartan Promotional Group, Inc. John and Mary Kay Sprangers St. Thomas the Apostle Parish Gary J. & Susan M. (Watson) Stadler Gary G. Stanoch Amy and Don Stehler Don and Mary Lou Stephani Lee and Maggie Stoerzinger Robert Stoven Jason Sturm James H. and Pamela Sullivan Bob Sullivan Colin and Mirjam Sultan Cleon and Pat Sundby Super 8 Motel-Bemidji Dinah L. Swain Sean and Hilary Sweeney Donald Talbot and Margaret (Pepin) Talbot Class of '63 Michael Tchida and Mary DuPlessis-Tchida Mr. and Mrs. Robert C. Tefft Texas Instruments Trista Vucetich Anderson Jane Wold Wagemaker John and Lynne Walfoort James and Wynona Warner Stephen Weber Wendy Weber Kenneally Scott and Jane Weik Donald and Dianne Weinberger Gerard J. Weingartner D.D.S. James and Janice Weingartz Mark and Deborah Wheeler Ted and Judy Whitney Thomas and Barbara Wiberg Mr. and Mrs. David Wilhelmly Stephen J. Willard Woodie Wilson '65 Warren and Barbara Simmons Fred A. Simon David Smith Jeffrey J. Smith Jack and Barbara (Smith) Reis Robert and Jennifer Snyder Pat McKeown Soderbeck '62 Robert and Jackie Sorenson Gary and Julie Sova Al and Gayle Spannbauer Spartan Promotional Group, Inc. John and Mary Kay Sprangers St. Thomas the Apostle Parish Gary J. & Susan M. (Watson) Stadler Gary G. Stanoch Amy and Don Stehler Don and Mary Lou Stephani Lee and Maggie Stoerzinger Robert Stoven Jason Sturm James H. and Pamela Sullivan Bob Sullivan Colin and Mirjam Sultan Cleon and Pat Sundby Super 8 Motel-Bemidji Dinah L. Swain Sean and Hilary Sweeney Donald Talbot and Margaret (Pepin) Talbot Class of '63 Michael Tchida and Mary DuPlessis-Tchida Mr. and Mrs. Robert C. Tefft Texas Instruments Trista Vucetich Anderson Jane Wold Wagemaker John and Lynne Walfoort James and Wynona Warner Stephen Weber Wendy Weber Kenneally Scott and Jane Weik Donald and Dianne Weinberger Gerard J. Weingartner D.D.S. James and Janice Weingartz Mark and Deborah Wheeler Ted and Judy Whitney Thomas and Barbara Wiberg Mr. and Mrs. David Wilhelmly Stephen J. Willard Woodie Wilson '65 Warren and Barbara Simmons Fred A. Simon David Smith Jeffrey J. Smith Jack and Barbara (Smith) Reis Robert and Jennifer Snyder Pat McKeown Soderbeck '62 Robert and Jackie Sorenson Gary and Julie Sova Al and Gayle Spannbauer Spartan Promotional Group, Inc. John and Mary Kay Sprangers St. Thomas the Apostle Parish Gary J. & Susan M. (Watson) Stadler Gary G. Stanoch Amy and Don Ste
--	---	---	---	--	--	---	---	--	--	--	--	---

Patrick J. Dieveney Ronald Dodd Joan Kaeder Doehling Tom and Roxanne Domini Colleen Doolittle Susan Barilla Dougherty Brian Douglas Mrs. Joseph Dragich Mr. Terence M. Dragich George and Patricia Dramdahl Deborah Ethen Drazek Michael and Carol Dressen Michael J. and Jodelle J. Dueber - Dueber Consulting, Inc. Donna Johnson Duell Mr. and Mrs. Pete Dukich Joy Dunna Angela Murray Eastman Andrea Eggert Mary Elizabeth Egan Eggert Sharon Meis Eichten Peter J. Eiswirth Wayne and Brenda Eklund Tamera Dolney Ekstrand and Eric Ekstrand Cindy Schulze Elg Donald and Kathleen Elofson Amy and Steven Enderlein Barbara Schiltgen Engel Bernadette Kelly Englehart Eleanor Enright Shaughn P. Erickson Julie Esch Kris and Rose Esteb Karen and Gerald Evans Mr. Jeremy D. Falk Rebecca Fandrich Rosanne Fastner Michael and Laura Fecht Fr. Joseph (Jerry) Feders, OSB Bona-Dai Beckstrom Fenzl Frank and Rosanne Fidler Ms. Marie J. Fidler Jonathan J. Finanger Michael Finnegan Constance A. Fitch Ms. Margaret Fitzgerald Ray and Terri (Maher) Flaherty Amy K. Flanagan Sandra Selbitschka Flanagan Patrick and Madeline Fleming Terence and Teri Fletcher Mr. and Mrs. James Focht Brad and Sharon Fong Jeannette Burger Ford Bonita and Scott Foster CJ Novotny Fox Dr. Eugene J. Fox Patricia Foley Franks Adrian and Mary Franssen Carmen Franzmeier Luke and Jennifer Freeman Nancy and Jim Friedrich Joseph F. Fuller Devin Gaden Tim and Annette Gagliardi	Bill and Barb Gahler Angelo & Cara (Auth) Galioto Lenny Garcia Mary C. Garvey Beverly Tschida Gausman and Kevin Gausman Rita R. Gehrenbeck Mary Burnett Gelderman Mrs. Karen Gemza Jane Gerard John M. Gerenz Thomas S. Gerenz Mrs. Patricia Gese Charles Giefer Daniel and Mary Jo Gilbert Mr. Brian Gilde Susan Mayer Gladish Ms. Teresa Goethel Robert and Kathleen Goff Marcia Wachtler Goldberg Ms. Anne Gorde Catherine Gorr Aaron Goulet Mrs. Vikki A. Grass and Mr. Darren N. Grass Mrs. Joan Graven Nansee and Jim Greeley Patricia Kiesling Lasnetske Greer Mr. Charles Gregory Mr. David Griffith Mr. and Mrs. Gerald Grochowski Mark W. Grothe Vincent Grundman Mike and Sally Guentzel Jim and Theresa Gunderson Teresa Gurin M.D. Maureen Guscetti Terrance Guterman Carol Danisch Haak Matthew W. Haas Erin Hacker Pete Hacker Robert Hackl Mrs. Linda Haeg Susan Halverson Mrs. Lisa A. Hamernick Jim and Diane Hanks Ray and Terri (Maher) Flaherty Amy K. Flanagan Sandra Selbitschka Flanagan Patrick and Madeline Fleming Terence and Teri Fletcher Mr. and Mrs. James Focht Brad and Sharon Fong Jeannette Burger Ford Bonita and Scott Foster CJ Novotny Fox Dr. Eugene J. Fox Patricia Foley Franks Adrian and Mary Franssen Carmen Franzmeier Luke and Jennifer Freeman Nancy and Jim Friedrich Joseph F. Fuller Devin Gaden Tim and Annette Gagliardi	Edward Heimel Caroline Heller Ms. Amy Shell Hering Lynne Leier Hermansen Juan Hernandez Kari and Craig Herrmann Karen Heyer Ed and Sharon Hill Jane Barrett Hill Jane Gerard John M. Gerenz Thomas S. Gerenz Mrs. Patricia Gese Charles Giefer Daniel and Mary Jo Gilbert Mr. Brian Gilde Susan Mayer Gladish Ms. Teresa Goethel Robert and Kathleen Goff Marcia Wachtler Goldberg Ms. Anne Gorde Catherine Gorr Aaron Goulet Mrs. Vikki A. Grass and Mr. Darren N. Grass Mrs. Joan Graven Nansee and Jim Greeley Patricia Kiesling Lasnetske Greer Mr. Charles Gregory Mr. David Griffith Mr. and Mrs. Gerald Grochowski Mark W. Grothe Vincent Grundman Mike and Sally Guentzel Jim and Theresa Gunderson Teresa Gurin M.D. Maureen Guscetti Terrance Guterman Carol Danisch Haak Matthew W. Haas Erin Hacker Pete Hacker Robert Hackl Mrs. Linda Haeg Susan Halverson Mrs. Lisa A. Hamernick Jim and Diane Hanks Ray and Terri (Maher) Flaherty Amy K. Flanagan Sandra Selbitschka Flanagan Patrick and Madeline Fleming Terence and Teri Fletcher Mr. and Mrs. James Focht Brad and Sharon Fong Jeannette Burger Ford Bonita and Scott Foster CJ Novotny Fox Dr. Eugene J. Fox Patricia Foley Franks Adrian and Mary Franssen Carmen Franzmeier Luke and Jennifer Freeman Nancy and Jim Friedrich Joseph F. Fuller Devin Gaden Tim and Annette Gagliardi	Jane A. Kennedy and Paul Larson Richard and Joanne Kern Mr. and Mrs. Lawrence Kidder James N. Klehr Robin and Garret Kleinendorst Mrs. Mary Kloek Marv & Mary Ann Kloetzke Jerome and Lisa Klonne Clyde and Gloria Klosner Joni (Dicker) and Jeff Knutson Robert and Catharine Knutson Bernie and Marcia Koalska Jim and Shirley Kocer Michael J. Kocer Christopher and Susan Koch James and Melissa Koch Thomas Koch Mr. and Mrs. Ronald A. Koetz Steven Kohler Ms. Theresa Kohls Julie Kohner Russell and Catherine Kohnner Mr. Leslie Koivula Joan E. Kopcinski Rodney and Susan Korf Ms. Sharon Korte Jeff Kosel Molly and Reggie Krakowski Lucille Kraml Joe Kranz Daniel and Onalie Kriha Karyn Kroening Mitchell Krueger Mrs. Marcia Krummel Philip and Susie Major Mrs. Stephanie Kunz Joseph Laber and Denise Ariola-Laber John LaCasse Louis and Rosanne (Maranda) LaCasse Marlene L'Allier Daniel M. Lamatsch Kathleen Valenty Lampland Diane and Roger Lanctot Jean (Grabowski) Landon Thomas Landshut Derek M. Lansing Chris A. Lapham Cassandra Doran Lasley Rosanne Schober Latawiec Renee Moore Lau Andrea Laudt Haley La Valle Keith and Sandy LeBlanc Shari LeBlanc Mrs. and Mr. Jo Ann Lechko Karen (Mackley) and Tony Leciejewski Allen and Shirley LeClaire Charles R. LeClaire Martin and Marcia Kay Lee Michelle and David Lee Mr. and Mrs. George Leier Karen Leier Anne (Novak) Leikam & Dave	Leikam Joyce Leko Jeanine Schwietz Lenzmeier Bruce and Donna Leonard Michael Leonard Tina Fida Lesnar Bill Lester and Judith O'Keefe Lester Mrs. Ann Lewerer Michael and Angela (Meirick) Lewis Peggy (Kelleher) Lindquist Jodi Maus Lingenfelter Sarah and Thomas Linhoff William P. Linhoff Jr. Mr. Thomas Lisee Susan M. (Ubel) Livingston Mike and Leanne (Roe) Lochen Mike and Linda Loos Kay Malmgren Louis Mr. Michael Lucey Mrs. Margaret Lucier Jeanne Lucio Carol Lukas Bert and Carolynn Lund, III Renee and Brian Luther Mrs. Laura Lynch-Domke Lisa M. Lyons Mrs. Linda MacCormack Ms. Angela MacDonald Anna Chastek Mack Michael and Jennifer Mackley Mary K. Mahoney Marjorie Mahoney Henderson Philip and Susie Major Marilyn Savard Malmgren Mrs. and Mr. Cheryl Maloney Marilyn Maltby Marjorie Mangine Ann Marcelin Robert M. Margo Jr. David Mariani Maria and Jon Martin Susan M. Martin Maternity of Mary-St. Andrew's School Mark J. Maurer Lawrence and Rosemarie May Cynthia Waldrup McArdell Mr. Connor J. McCallum Ms. Corrine C. McCallum Margaret McCarthy Scott McCauley Alfred McComber Laura Ann Walton McDaniels Martha and James Mcdermott Mary McDonald Lucy Poole Richard Potts Lawrence and Debra Praml Mrs. Constance M. Prego Mary Anne O. Pretzel Mrs. Marie Priolo Judith Pritschet Mr. Harold Prust Jerome and Mary Pults	Bruce and Shelly McQuade Medtronic Charity Trust Account Kathryn Meintsma Barb Melander John F. Melcoch Paul and Kathryn Mencke Refugio S. Mendez Ralph and Phyllis Mergen Mrs. Suzanne Merwin Stephen R. Metzdorf Kimberly Meuwissen Kahat and Steve Kahat Beverly A. Meyer Mr. and Mrs. David G. Meyer Greg and Gina Meyer Sandra Michel Aaron and Jennifer Miller Steven and Janet Miller Kristine Phipps Miller Melissa Satre Miller Troy and Michelle Miller Dennis M. Milotzky and Rose- mary A Schumacher Darrin J. Minehan Jody DeMars Minke Mark and Jennifer Misgen Mr. Michael Misgen Lee and Susan Mitchell George and Jackie Mlynarczyk Dennis Moes Dennis and Patty (Steiner) Mogren Diana J. Molitor Michael and Jane Monita Mary Ann Montgomery Melissa and Robert Montgomery Nancy Montpetit Jennifer Martin Moore Jimi & Mary Beth (Damato) Morelli Margaret Mulvaney Morgan Michael Morley Maureen Rose Morrison Kurt and Jolie Mouton Moyer Family Jeffery and Kathleen Mrozinski Douglas Muellerner Todd and Toni Muellerner Ms. Beth Mulcahy Capt. and Mrs. John W. Mullarky, USN (Ret.) Kathleen Gelbmann Mullin Sean and Mary Anne Muniz Michael and Susan Murphy Michelle Jones Murray and Charles Murray Mr. Donald Nadeau Mr. and Mrs. David Nalipinski Heather LeVesueur Rose M. Neis Kristen and Blake Nelson Ms. Susan Nelson Edward J. Nemetz Joseph and Judie Nemo James and Shari Nepper Network for Good Ms. Nancy Neubauer	Dr. Debra Nickelson Mrs. Kristen Nicklawске and Mr. Michael Nicklawске Albert and Louise Nieters Carolyn Jambor Nitz Kathleen Whisler Nord Tiffany A. Norton Mr. Dennis Novack Ms. Kathleen M. Novak Bob and Jeanne Novak Piotr and Mary Ann (Wiatros) Nowak Mark C. Nyman Paul and Marie Oberle Mary Jo Svendsen O'Connor Kym O'Donnell Carly Ogata and Max McCord Aaron and Jennifer Miller Steven and Janet Miller Kristine Phipps Miller Melissa Satre Miller Troy and Michelle Miller Dennis M. Milotzky and Rose- mary A Schumacher Darrin J. Minehan Jody DeMars Minke Mark and Jennifer Misgen Mr. Michael Misgen Lee and Susan Mitchell George and Jackie Mlynarczyk Dennis Moes Dennis and Patty (Steiner) Mogren Diana J. Molitor Michael and Jane Monita Mary Ann Montgomery Melissa and Robert Montgomery Nancy Montpetit Jennifer Martin Moore Jimi & Mary Beth (Damato) Morelli Margaret Mulvaney Morgan Michael Morley Maureen Rose Morrison Kurt and Jolie Mouton Moyer Family Jeffery and Kathleen Mrozinski Douglas Muellerner Todd and Toni Muellerner Ms. Beth Mulcahy Capt. and Mrs. John W. Mullarky, USN (Ret.) Kathleen Gelbmann Mullin Sean and Mary Anne Muniz Michael and Susan Murphy Michelle Jones Murray and Charles Murray Mr. Donald Nadeau Mr. and Mrs. David Nalipinski Heather LeVesueur Rose M. Neis Kristen and Blake Nelson Ms. Susan Nelson Edward J. Nemetz Joseph and Judie Nemo James and Shari Nepper Network for Good Ms. Nancy Neubauer	Quilts by Kate Mr. Mark Quinlan Michael J. Quinn Michele Green Radosevich Patricia Curran Rainer Debra Welter Rakieten Mr. and Mrs. Antonio Y. Ramirez Mr. Chris Ranweiler Janet Egan Rapp Ms. Jennifer A. Rau Mrs. Janet Rayburn Michaela[e] J. Raymond Terry McKeague Reasoner Frances Regan Elizabeth Reisdorf Dan and Pam Reitzel Mr. and Mrs. Mark Reller Terry Monette and Mike Remarcke Anne Marie Renteria Suzanne Rich Matt & Shiloh Ricker Mary and Mary Riedesel; Kathy Harvey; Kim Antoine Joe Rieth Luis and Maura Rivera Kathleen Squires Robbins Brian D. Roberge Colleen M. Robinson Mary Lynch Robinson Robin (Montpetit) and Christopher Rodgers Mr. Joseph Rodriguez Mrs. and Mrs. William Rogers Linda Liesenfeld Rohland Jane and Phillip Rolnick Cynthia Veitch Rosey Mrs. and Mr. Brenda Rosemark Lori Roskoski Mr. David Rossi Patricia Jones Roy-Chalmers Mrs. Phyllis Ruchie Terry Ann Ruda Mark and Janene Slagle Lucena K. Slaten Rozanne and Robert Smeed Dr. Andrew Smith and Mrs. Margaret Smith Donavan G. Smith III Gregory Smith Mr. Paul Soucheray Mr. Daniel J. Sova Mr. and Mrs. Anthony A. Sowada Mark Spangler Doug and Annette Spencer Mr. Robert St. Martin St. Pascal's Council of Catholic Women Mr. and Mrs. Joseph Stacey Sue Ryan Stack Ann Grzywinski Stahley William and Carol Stauffer, III Casey Staum Monique Davis Steiner Corey D. Sauer Christine Roehl Sauter Doris Zielinski Schaffer Ms. Michele Stephens	Shirley and David Schelling Mr. Brad Schliesing Ms. Joan Schmelzle Mr. Jack F. Schmid Ms. Madeline C. Schmid Stephen and Patricia Schmid Jeffrey and Melissa Schmidt Thomas R. Schneeweis Gerald and Marion Schneider Jack and Mary Schneider Diane Sivald Schoenrock Dolores Schreiner Jeffrey Schuhwerck Jessie Schultz Kelly Jo Freichels Schultz Rosemary (Hamilton) Schultz Ellie Schwartz Mike Schwartz and Judy Hajlo Schwartz Raymond Schwartz Jr. Bill and Lorraine Schwietz Mary Schwartz Dimick and Mark Dimick Carolyn Scott Ph.D. Cynthia Tarara Scudiero Frank and DeLores Seidl Teresa Senger Kelly Crowley Severson Nicholas Shaw Michael and Charlene Sheahan Monica Shearon Michael J. Sherman Dr. and Mrs. Patrick E. Shields Barbara Shock James S. Shuda Bonnie Hamerick Sigstad and Gerald Sigstad Mrs. Mary Silbaugh Ms. Megan E. Silbernagel William and Diane Simmons John and Angela Skarda Ms. Shirley Skarda Mark and Janene Slagle Lucena K. Slaten Rozanne and Robert Smeed Dr. Andrew Smith and Mrs. Margaret Smith Donavan G. Smith III Gregory Smith Mr. Paul Soucheray Mr. Daniel J. Sova Mr. and Mrs. Anthony A. Sowada Mark Spangler Doug and Annette Spencer Mr. Robert St. Martin St. Pascal's Council of Catholic Women Mr. and Mrs. Joseph Stacey Sue Ryan Stack Ann Grzywinski Stahley William and Carol Stauffer, III Casey Staum Monique Davis Steiner Corey D. Sauer Christine Roehl Sauter Doris Zielinski Schaffer Ms. Michele Stephens	Patricia LaCasse Stevensen Catherine Still Dan and Kim Stock Jody Stoffels Ellen and Reinhard Stotzer Judith Strobel Elmer Strohmeier Karin A. Strub Mr. and Mrs. Martin Strub Dr. and Mrs. Thomas P. Sturm, Ph.D. James Suchan and Patricia J. Schaffer-Suchan Karen and Joe Sullivan Theresa M. Sullivan Colleen and William Sumey Lynn A. Supan Barbara Ruza Swanson Jennifer (Gelbmann) and Brent Swanson Kimberly Rustad Swanson Jill Aschenbrenner Swenson Lisa Faust Swenson Gregory J. Tauer Tom and Barb Teresi Bill and Kathleen Tetzlaff Pamela J. Thiltgen-Hester Richard and Judith Thomalla Tina Thompson Todd and Lisa Thoms Bonnie Thirk Gerald Thurk Carol LeClaire Timm Phyllis Timm Ms. Therese Tingerthal Sharon Jost Tocko Cheryl D. Toenjes Martin and Mary Ellen Tollefson Kathie Allen Tope Mrs. Catherine Torning Gregory and Susan Truskolaski Peg Opitz Tschida Paul and Nancy Tucci Patricia Hagel Turner Polly Uner Bruce and Shannon Uphus Mrs. Suzanne Urban Timothy and Julie Valento Joe Varela Michael Venaglia James Vernstrom Andrea (Hesse) Vizenor Mr. and Mrs. Stephen Voigt Voya Cory and Susan Wagner Elizabeth Burke Wagner Michelle Cardinal Wahlstrand Mr. Edward Waldera Mr. and Mrs. Joseph Stacey Sue Ryan Stack Ann Grzywinski Stahley William and Carol Stauffer, III Casey Staum Monique Davis Steiner Corey D. Sauer Christine Roehl Sauter Doris Zielinski Schaffer Ms. Michele Stephens	Mr. and Mrs. Daniel J. Wermers, Jr. Arthur and Janice Weser Timothy and Mary Wess Deanna and Norm Westby Marilyn Maltby Cynthia Waldrup McArdell Suzanne Nuebel Merwin Roger and Carol Whitcomb Fran Wiatros Ms. Kelly Netwal Anthony E. Wilfahrt Amy Kurtz Wilson and Bruce Wilson Bob Wind M. J. Wingate Jacob H. Wittl Dr. Patricia Barrett Wolff Jane Charbonneau Wolke Ted Wolkstorfer Michael and Kristy Woulf Mrs. Cynthia Wiskey and Mr. Richard F. Wiskey David and Julianne Wymia Angela Yarusso Kyle J. Yarusso Mike and Tanya Yeo Daryn Zaffke Thomas Zahalka Michael and Bernadette (Lais) Zasada Mrs. Avias Zell Arthur and Marilyn Zenzen LeRoy Zeuli Gina Nardini Zitzer Mr. and Mrs. Dominic C. Zweber Laura Zangs Zweber	Diane Broz Peltzer Margaret Pepin Talbot Class of 1964 Mary Reddy Barrett Jane Collova Margaret Leko Colombo Sharon Gososki Dimond Barbara Hubbell Erickson Kathleen Wendel McManus Sherri Murphy Miske Terry McKeague Reasoner Rosemary Hamilton Schultz Margaret Shields Lindlof Class of 1965 Janet Wieteki Ahern Joanne Rabenack Anderson Marilyn Connolly Baesler Bonita Tobritzhofer Berguetski Mary Liesenfeld Boran Karol Hebl Bowman Mary Ellen Garvey Bruski Sharon Tucker Buirge Kathleen Reis Callahan Sharon Kaintz Carter Patricia Breneman Cheney Cheryl Collyard Colestock Sandra Troehrenbach Collins Claudia Drake Curtis Candace Wagner Damlo Judith David Gail Quigley DeBruzzi Sharon Giem Dewitz Maureen O'leary Diem Mary Goossens Dieveney Joan Frenning Dillon Donna Johnson Duell Susan Elkins Bona-Dai Beckstrom Fenzl Jeannette Burger Ford Bonita O'Rourke Foster CJ Novotny Fox Nancy Adam Friedrich Mary Brannigan Gaboury Nansee Lawrence Greeley Patricia Kiesling Lasnetske Greer Mary Ann Picard Gruba Carol Danisch Haak Jo Ann Rivard Horrisberger Colleen Reddy Humphreys Christine Schmid Jacobson Jacqueline Holte Jansen Constance Jensen Janice Armstrong Jones Patricia Jones Susan Lange Kainz Stephanie Heinen Kunz Rosanne Maranda LaCasse Kathleen Valenty Lampland Linda Radford Lawrence Shari LeBlanc Judith O'Keefe Lester Carol Lukas	Linda Molitor MacCormack Len and JoAnne (Pierce) Mackley Mary Mahoney Marilyn Savard Malmgren Marilyn Maltby Cynthia Waldrup McArdell Suzanne Nuebel Merwin Mary Ann Appert Montgomery Mary Morelli Susan Nelson James Schiltgen Nikola Kathleen Whisler Nord Beverly Carr O'Brien Mary Jo Svendsen O'Connor Joanne Boschert Piepho Michele Green Radosevich Patricia Curran Rainer Linda Liesenfeld Rohland Linda Kroll Rudeen Linda Stein Rulli Amalia Aguilar Ryan Doris Zielinski Schaffer Dianne Farrell Shiely Rita Gresback Shor Jean Stepan Sharon Jost Tocko Patricia Hagel Turner Elizabeth Burke Wagner Barbara Walkosz Mary Kluge Watson Patricia Barrett Wolff Jane Charbonneau Wolke Class of 1966 Rochelle Schmitt Adams Susanna Aguilar Anderson Mary Jo Lechner Auger Sandra Cunnien Balfanz Maureen Barrett Kathleen Stahl Berger Joan Travis Bles Eileen Twohy Capecchi Pamela Chickett Lucy Holland Clagherty Mary Beth Didion Susan Barilla Dougherty Barbara Schiltgen Engel Bernadette Kelly Englehart Susan Mayer Gladish Marcia Wachtler Goldberg Susan Smith Hauwiller Mary Huth Holbrook Carol Hendrickson Jagoe Janet Pendergrass Johnson Jeanine Schwietz Lenzmeier Viola Manteufel Lincowski Susan Ubel Livingston Wanda Pope Lorsung Margaret Skipon Lucier Mary McDonald Nancy Moberg Sharon Thoele Moore Nancy Neubauer Debbie Olson-Lhotka	Elizabeth O'Mara Karen Kohner Paist Kathy Conaboy Pakarinen Katheryn Carlson Patterson Linda Vessenmeyer Petri Kathleen Lasar Plapp Jo Anne Mottaz Policone Marie Casey Priolo Judith Pritschet Patricia Jones Roy-Chalmers Christine Ciernia Sandow Joan Schmelze Diane Sivald Schoenrock Cynthia Tarara Scudiero Mary Sheehan Bonnie Hamernick Sigstad Mary Carlson Silbaugh Shirley Skarda Nancy Fuller Studiner Catherine Shea Torning Barbara Van Norman Frame Jane Wold Wagemaker Linda Faust Weiszel Beverly Wittgenstein Class of 1967 Bernadette Voigt Crawford Candyce Murray Ihnot Joanne Langevin Kern Marjorie Mahoney Henderson Marjorie Mangine Kathleen GelbmannMullin Jacqueline Petersen Pamela Thiltgen-Hester Class of 1968 Kathleen Lais Drabik Kathleen Driscoll Hellen Constance Fitch Patricia Jackels Heimann Louise Gresback Joyce Marcia Passe Krummel Doris La Coursiere Lueneburg Barbara Melander Jane Persoon Joanne Stoffels Kathleen Allen Tope Class of 1969 Barbara Valenty Bicha Kristine Lange Boland Anna Dandrea Fehring Barbara Wind Gahler Debra Morrell Godbout Theresa Brown Goerke Cheryl Kennedy Maloney Linda Pertz Parkinson Suzanne Beguhl Urban Mary Pat Navins Wlazik Mary Lee Egan Zrust	Class of 1970 Mary Jean Felix Anderson Susan Anderson Dianna Steiner Beery JoAnn Schumacher Boettcher Margaret Clarkin Patricia DuCharme Coan Nancy Cournoyer Mary Schiltgen Delaney Joan Kaeder Doehling Patricia Foley Franks Beverly Tschida Gausman Joan Hipple Graven Mary Dee Hacker Janet Jones Jean Grabowski Landon Jo Ann Kaase Lechko Sarah Peltier Linhoff Mary McFarland Brooks Lauri Hawthorne McGee Peg McDonough Moreno Beth Mulcahy Kathryn Meyer Pittelko Christine Langevin Podobinski Mary Jo Wojcik Rafferty Kathleen Squires Robbins Kathleen Conroy Sandstrom Cyndia Montpetit Schweiger Karen Milla Shanley Barbara Ruza Swanson Christine Weyandt Twohy Cindy Laschinger Wandersee Cynthia Winkler Wiskey Bernadette Lais Zasada Class of 1971 Kristine Black Margaret Opitz Tschida HILL HIGH SCHOOL Class of 1962 Michael Cooney Thomas Fitzgibbon, Jr. Thomas House Robert Jones Thomas Kinsella David Schiltgen James Weidner Class of 1963 John Antoncich James Brockman Richard Dell Donald Delsing Michael Finnegan John George James Grochowski Kenneth Kosel Robert Lawrence, III David Mariani Richard McNamara	David Nalipinski Robert O'Dea Bernard Schmidt Walter Schreiner John Schwietz James Suchan Donald Talbot Richard Unger LeRoy Zeuli Class of 1964 Steve Babcock John Berger Robert Casci Lawrence Charbonneau Patrick Crowley Ronald Dodd James Hayne John Heller Daniel Ireland Thomas Landshut Keith LeBlanc William Linhoff Dennis Novack Joseph Rafferty Anthony Reber Harold Schultz Robert Stoven Thomas Sturm Raymond Voelker John Walfoort Class of 1965 Joseph Adelmann John Ahern Wiley Askew Joseph Bennett Robert Beskar Denis Biagini Mark Butala Lucian Castor J. Patrick Conway Robert Daly Arnold Dick Raymond Flaherty Adrian Franssen Leonard Garcia Thomas Gerenz Gerald Grochowski Richard Heckel Juan Hernandez Donald Holly Richard Holtkamp Lawrence Kidder James Klehr Thomas Lisee Philip Major Mark Maurer Timothy McGibbon Paul McNellis, S.J. John Melcoch Refugio Mendez Dennis Moes Thomas Mogren
--	---	---	---	--	---	---	--	--	---	--	--	--	---	--	--

Michael Morley Donald Nadeau Joseph Nemo James O'Donnell Gregory Patient John Pogue Thomas Policone Harold Prust Thomas Rankin John Reif David Rossi Carmen Sarrack Thomas Schneeweis Raymond Schwartz Patrick Schwietz Jeffrey Seidl Robert St. Martin William Tetzlaff Gregory Truskolaski Stephen Voigt Edward Waldera Anthony Wilfahrt David Wilhelmy Roger Wilson Gregory Youngs	Robert Hilpisch Rodney Korf Stephen Lange Jay Montpetit James Reichtiene James Rydeen Gary Stanoch William Wold	Bernard Schaumburg Fred Simon	Class of 1975 Barbara Klein Anderson Diane Geisen Angelo Thomas Cain Julie Walsh Conrad Stephen Davis Judith Mildenberger DeRosa Colleen Wilson Doolittle Andrea Eggert Mary Elizabeth Egan Eggert Joseph Feders Sandra Selbstschka Flanagan Eugene Fox Joseph Fuller Mary Burnett Gelderman Mary Jo Anderson Gilbert Mark Grothe John Hansen Michele Mazur Hanson Jane Barrett Hill Kathleen Hannigan Hofmeister Kenneth Holl Christine Johnson Jean Ries Karpe Mary Matt Klock Mark Klosner Thomas Koch Steven Kohler Rosanne Schober Latawiec Charles LeClaire Tina Fida Lesnar Michael Lucey Donald Mandel Gregory Meyer Janet Hudalla Miller Jennifer Martin Moore James Mahoney Maureen Rose Morrison Douglas Muellerner Rose Neis Edward Nemetz Debra Nickelson Kathleen Kotula Olson Scott Persby Lucy Poole Mary Anne Pretzel David Reif Mary Lynch Robinson Cynthia Veitch Roney David Sagstetter Dianne Meis Eichten Cindy Schulze Elg Karen Riley Evans Patrick Faust James Hoffman Brian Karschnia Maureen McDonough Dennis Mogren Jeffery Mrozinski John Pierce Michael Quinn Janet Egan Rapp Mary Russell	Duane Cloud William Erickson David Grupa Molly Treacy Hottinger Cathy Kegley Jeske Gerald Karel Robin Fasciana Keenan Melissa Sauer Koch Julie Kohner Peter Koller Barbara Hoheisel LaPolice Richard Prokosch Mary Hangge Regan Patrick Regan	Carolyn Scott John Skarda Emily Treacy Springer Thomas Tucci Deborah Heider Vranys Richard Walz Wendy Weber Weber Kenneally JohnYarusso	Michael McGurran Karen Yarusso Patterson Paul Petronack Michele Johnson Riley Christopher Rueb Paul Soucheray	Brian Mogren Katie Regan Nath Carolyn Jambor Nitz Kelly McGrath Petersen Cynthia Schneider Pilney Michon Mahowald Potter Heidi Schwachtgen Reller Kevin Rich Brian Roberge Kimberly Roe Nelson Mark Rogers Brenda Petersen Rosemark Michael Roth Sarah Rys Christine Roehl Sauter Matthew Schroepfer David Schwartz Barbara Shock Roseanne Silva Bradd Soutor Ann Grzywinski Stahley Lisa Faust Swenson Theresa Tingerthal Cheryl Toenjes William Tronsen Bruce Uphus Michael Duerber Angela Murray Eastman Tamera Dolney Ekstrand Colby Falk Amy Flanagan Cara Auth Galiotto Anne Gorde David Griffith, D.C. Maureen Fahey Buntje Gary Davis David Faust Julia Garofalo Snell Robert Gerenz Jeffrey Gibbons Ronald Granger Shawn Huot Ilgen Patrick McNamara Steven Holm Gregory Heim Thomas Rentsch Elizabeth Flentje Tollefson Andrea Hesse Vizenor	Sean Regan Joseph Sampair, Jr. Michael Sherman John Treacy	Class of 1982 Mary Appleby Rene Norsten Brahmstadt Shaughn Erickson Nancy Hajlo Johnson Kim Rosset Hinton Richard Hogan John Hughes Cynthia Marty Korman Jacqueline Meyer LaMonica Scott McCauley Cindy Quehl Patrick Sauer Joseph Sullivan Glen Tischler Mary Jo McComber Wertzler Benita Hoheisel Whalen Nancy Soutor Whaley Thomas Wilson	Class of 1980 Terese Celski Atzmilller Anne Brudzinski Rose Werner Caswell Suzanne Conlin Mary Quinn Daleiden John Dow, Jr. Lee Juba Eastman Barbara Flasch Mary Eiswirth Fredricksen Anthony Hoffman Henry Katzmarek Teresa Goethel Nancy Fitch Goetzke Christine Griffith-Dittberner Linda Nasseff Haeg Steven Hayne Lynne Leier Hermansen Mark Holland Nancy Holm Callas Michael Holmes Paul Johnson Sharon Rebeck Korte Laura Lynch-Domke Kimberly Meuwissen Kahat Todd Muellner M. Emily Goetz Nieters Debra Welter Rakieten Jane Grupa Russo Mary Sampair Margaret Saracino Saracino Sutherland William Schafhauser Monica Shearon Susan Thurston John Trudeau Paul Tucci Mary Jo Wingate Mary Asenbrenner Zimmer	Michael McGurran Karen Yarusso Patterson Paul Petronack Michele Johnson Riley Christopher Rueb Paul Soucheray	Brian Mogren Katie Regan Nath Carolyn Jambor Nitz Kelly McGrath Petersen Cynthia Schneider Pilney Michon Mahowald Potter Heidi Schwachtgen Reller Kevin Rich Brian Roberge Kimberly Roe Nelson Mark Rogers Brenda Petersen Rosemark Michael Roth Sarah Rys Christine Roehl Sauter Matthew Schroepfer David Schwartz Barbara Shock Roseanne Silva Bradd Soutor Ann Grzywinski Stahley Lisa Faust Swenson Theresa Tingerthal Cheryl Toenjes William Tronsen Bruce Uphus Michael Duerber Angela Murray Eastman Tamera Dolney Ekstrand Colby Falk Amy Flanagan Cara Auth Galiotto Anne Gorde David Griffith, D.C. Maureen Fahey Buntje Gary Davis David Faust Julia Garofalo Snell Robert Gerenz Jeffrey Gibbons Ronald Granger Shawn Huot Ilgen Patrick McNamara Steven Holm Gregory Heim Thomas Rentsch Elizabeth Flentje Tollefson Andrea Hesse Vizenor	Class of 1988 Lisa Henschell Axelson George Behr Amy Jakubowski Canero Jane Schwoelch DeFlorio Jon DeJager Amy Melchior Dinzeo Paul Dinzeo Lori Quinlan Fleischhacker Amy Joynson Gutknecht Cheryl Winkel Luger Mark Luger Angela Macdonald John Mathson Kristen Roe Nelson Jonathan Schmelz Jason Sturm, USMC (Vet) Mark Tollefsbol Raymond Vennewitz Anthony Yocum, V Daryn Zaffke	Anne Leikam Jodi Maus Lingenfelter Anna Chastek Mack Michael Mackley Sean McTeague Sandra Michel Melissa Satre Miller Troy Miller Mark Misgen Melissa Frazer Montgomery Tiffany Norton Colleen Hartigan O'Malley Lori Kindler Roskoski Corey Sauer Kelly Jo Freichels Schultz Kristen Roe Nelson Jonathan Schmelz Jason Sturm, USMC (Vet) Mark Tollefsbol Raymond Vennewitz Anthony Yocum, V Daryn Zaffke	Jeannie Bykowski Kenevan Daniel Lamatsch Timothy Mackley Michelle Jones Murray Matthew Ricker Scott Rizzardi Clint Rowles Jennifer Nemeth Ruthig Jeffrey Schmidt Karin Strub Amy Kurtz Wilson	Casey Regan Erin Motz Ryan Ryan Shanley Donavan Smith	Class of 2010 Catherine Dolan Emily Hazelton	Class of 2011 Connor McCallum Corrine McCallum Madeline Schmid Kyle Yarusso	Class of 2012 David Simmet	Class of 2013 Daniel Dolan Jack Schmid	Class of 2015 Leanne Adamsky John Blaney Jacob Wittl	Class of 2016 Amanda Andert Hannah Angeli Anthony Bobrowski Paris DeLisle Joy Dunna Eleanor Enright Mike and Judith Franey Erin Hacker Caroline Heller Mitchell Krueger Andrea Laudi Haley LaValle Austin Peterson Frances Regan Joe Rieth Sean Ryan Ellie Schwartz Nicholas Shaw Casey Staum Mckenzie Steffen Catherine Still Angela Yarusso	Pamela and Gary Wolf Brian and Annette Young	Mr. and Mrs. James Cochran Joseph Coughlin and Shannon Faust Coughlin Julie and Trevor Cronk Lisa Crum Amy Cuadrado Strub and William Strub Jim Damato Todd and Julie Davies Don and Maureen Delsing Richard and Sheryl Dentinger Paul and Amy (Melchior) Dinzeo Paul and Amy (Melchior) Dinzeo Jim and Kelly Donnelly Jon and Becky (Pearson) Dostal Douglas and Yvette Du Fresne Sara Edell and Dee Reinking Tony and Summer Eger Mr. and Mrs. Ross Eib Kathy and Jack Elliott Michael and Shannon Enright Mr. James Eret Kris and Rose Esteb Robert and Amy Etten Matt and Katy Fairbanks David and Denise Faust Scott and Sue Faust Terry and Kim Faust Gary and Betty Faust Mari and Mike Fellrath Lori and Steven Fleischhacker Mr. and Mrs. Robert Florence Toni and Carmen Foley Bernard and Jessica Francis Mike and Judith Franey Louise Jane Fratto Mark and Nancy Gallagher Michael and Heather Gannon The Garofalo Foundation Jackie and Robert Garofalo Robert and Jackie Garofalo Julia Garofalo Snell D.D.S. and Todd Snell Gregory and Suzanne Gartner Joseph and Pamela Germ Gerald and Mary Glomb Rodrigo and Joan Gonzalez Jason and Gina Gorman John and Kim Gozum Chris Griffith-Dittberner and Joel Dittberner Tony and Jodie (Meyer) Gruba Daniel and Carrie Hackman John and Carrie Hansen John and Sheri Celski Lisa and Steve Cichy Benjamin and Molly Cirillo Tony Ciro The Ciro Family Lee and Yvonne Clintsman	MATCHING GIFTS Ameriprise Financial Gift Matching Program BAE Systems Matching Gift Plan Baxter International Foundation Deluxe Corporation Foundation Eli Lilly and Company Founda- tion, Inc. General Mills Foundation H.B. Fuller Company Foundation Ingersoll-Rand Charitable Foundation Medtronic - Your Cause, LLC RBC Foundation - USA Securian Financial Group, Inc Texas Instruments Thomson Reuters - West Corporation UnitedHealth Group Wells Fargo Foundation Educa- tional Matching Gift Program Wells Fargo Matching Gifts Program	Class of 2017 Elizabeth Ahles Bo Dolan Samantha Donegan Marie Fidler Michael Kochevar Megan Menke Silbernagel Daniel Sova	Class of 2018 Janey Atchison Meghan Simmet Kayla Yarusso	Class of 2019 Benjamin Cirillo Louise Ewald Amanda Jacobson Gutierrez Jessica Steinhoff Howey Angela Collova Huotari Kathryn Jamieson Kathryn Keller Kathleen Pilkington Rooney	Class of 2020 Sarah Bartol Michael Leonard Angela Regan Mattingly	Class of 2021 Emily Hanson Brooks Charles Giefer Laura Kingston Daniel Miller Stacey MorganRobertson Cory Ryan Scott Schwietz Brian Tischler	Class of 2022 Thomas Brenny Alicia Flores Hensler Jodi Joynson Klepac Joseph Kranz Jessica Cauer Nickelson Laura Myhre Wallander	Class of 2023 Jonathan Brass Barbara Schmaltz Eiferman Stephanie Dehart Gallatin Jason Godbout Clarissa McGahuey Green Lisa House Hamernick Daniel Hofstetter Katherine Schwietz Jacoboski Michael Juulich Dennis Keffer	Class of 2024 Steven Andert Julie Thalhuber Bendel Susan Schurb Boosalis Anthony Curella Timothy Floyd Eric Galler Gregory Gartner Cheri Gerenz James Gunderson Teresa Keller Gurin Victoria Buchholz Halvorsen Monica Hesse Hamer Matthew Hudachek Dawn Rivera Jewett Jennifer Johnson Debra Wheeler Kranz Leanne Roe Lochen	Class of 2025 James Asenbrenner Mark Collova Daniel Connors Joan Fehring Harrison Rebecca Hoffman Mark Lanctot Michael Mazur Mary Bagan McPherson James Morelli Wallace Ristow, Sr. Robin Montpetit Rodgers John Russell Judith Hajlo Schwartz	Class of 2026 Kathleen Faust Averbeck Joseph Baumann	Class of 2027 James Asenbrenner Mark Collova Daniel Connors Joan Fehring Harrison Rebecca Hoffman Mark Lanctot Michael Mazur Mary Bagan McPherson James Morelli Wallace Ristow, Sr. Robin Montpetit Rodgers John Russell Judith Hajlo Schwartz	Class of 2028 James Asenbrenner Mark Collova Daniel Connors Joan Fehring Harrison Rebecca Hoffman Mark Lanctot Michael Mazur Mary Bagan McPherson James Morelli Wallace Ristow, Sr. Robin Montpetit Rodgers John Russell Judith Hajlo Schwartz	Class of 2029 James Asenbrenner Mark Collova Daniel Connors Joan Fehring Harrison Rebecca Hoffman Mark Lanctot Michael Mazur Mary Bagan McPherson James Morelli Wallace Ristow, Sr. Robin Montpetit Rodgers John Russell Judith Hajlo Schwartz	Class of 2030 James Asenbrenner Mark Collova Daniel Connors Joan Fehring Harrison Rebecca Hoffman Mark Lanctot Michael Mazur Mary Bagan McPherson James Morelli Wallace Ristow, Sr. Robin Montpetit Rodgers John Russell Judith Hajlo Schwartz	Class of 2031 James Asenbrenner Mark Collova Daniel Connors Joan Fehring Harrison Rebecca Hoffman Mark Lanctot Michael Mazur Mary Bagan McPherson James Morelli Wallace Ristow, Sr. Robin Montpetit Rodgers John Russell Judith Hajlo Schwartz	Class of 2032 James Asenbrenner Mark Collova Daniel Connors Joan Fehring Harrison Rebecca Hoffman Mark Lanctot Michael Mazur Mary Bagan McPherson James Morelli Wallace Ristow, Sr. Robin Montpetit Rodgers John Russell Judith Hajlo Schwartz	Class of 2033 James Asenbrenner Mark Collova Daniel Connors Joan Fehring Harrison Rebecca Hoffman Mark Lanctot Michael Mazur Mary Bagan McPherson James Morelli Wallace Ristow, Sr. Robin Montpetit Rodgers John Russell Judith Hajlo Schwartz	Class of 2034 James Asenbrenner Mark Collova Daniel Connors Joan Fehring Harrison Rebecca Hoffman Mark Lanctot Michael Mazur Mary Bagan McPherson James Morelli Wallace Ristow, Sr. Robin Montpetit Rodgers John Russell Judith Hajlo Schwartz	Class of 2035 James Asenbrenner Mark Collova Daniel Connors Joan Fehring Harrison Rebecca Hoffman Mark Lanctot Michael Mazur Mary Bagan McPherson James Morelli Wallace Ristow, Sr. Robin Montpetit Rodgers John Russell Judith Hajlo Schwartz	Class of 2036 James Asenbrenner Mark Collova Daniel Connors Joan Fehring Harrison Rebecca Hoffman Mark Lanctot Michael Mazur Mary Bagan McPherson James Morelli Wallace Ristow, Sr. Robin Montpetit Rodgers John Russell Judith Hajlo Schwartz	Class of 2037 James Asenbrenner Mark Collova Daniel Connors Joan Fehring Harrison Rebecca Hoffman Mark Lanctot Michael Mazur Mary Bagan McPherson James Morelli Wallace Ristow, Sr. Robin Montpetit Rodgers John Russell Judith Hajlo Schwartz	Class of 2038 James Asenbrenner Mark Collova Daniel Connors Joan Fehring Harrison Rebecca Hoffman Mark Lanctot Michael Mazur Mary Bagan McPherson James Morelli Wallace Ristow, Sr. Robin Montpetit Rodgers John Russell Judith Hajlo Schwartz	Class of 2039 James Asenbrenner Mark Collova Daniel Connors Joan Fehring Harrison Rebecca Hoffman Mark Lanctot Michael Mazur Mary Bagan McPherson James Morelli Wallace Ristow, Sr. Robin Montpetit Rodgers John Russell Judith Hajlo Schwartz	Class of 2040 James Asenbrenner Mark Collova Daniel Connors Joan Fehring Harrison Rebecca Hoffman Mark Lanctot Michael Mazur Mary Bagan McPherson James Morelli Wallace Ristow, Sr. Robin Montpetit Rodgers John Russell Judith Hajlo Schwartz	Class of 2041 James Asenbrenner Mark Collova Daniel Connors Joan Fehring Harrison Rebecca Hoffman Mark Lanctot Michael Mazur Mary Bagan McPherson James Morelli Wallace Ristow, Sr. Robin Montpetit Rodgers John Russell Judith Hajlo Schwartz	Class of 2042 James Asenbrenner Mark Collova Daniel Connors Joan Fehring Harrison Rebecca Hoffman Mark Lanctot Michael Mazur Mary Bagan McPherson James Morelli Wallace Ristow, Sr. Robin Montpetit Rodgers John Russell Judith Hajlo Schwartz	Class of 2043 James Asenbrenner Mark Collova Daniel Connors Joan Fehring Harrison Rebecca Hoffman Mark Lanctot Michael Mazur Mary Bagan McPherson James Morelli Wallace Ristow, Sr. Robin Montpetit Rodgers John Russell Judith Hajlo Schwartz	Class of 2044 James Asenbrenner Mark Collova Daniel Connors Joan Fehring Harrison Rebecca Hoffman Mark Lanctot Michael Mazur Mary Bagan McPherson James Morelli Wallace Ristow, Sr. Robin Montpetit Rodgers John Russell Judith Hajlo Schwartz	Class of 2045 James Asenbrenner Mark Collova Daniel Connors Joan Fehring Harrison Rebecca Hoffman Mark Lanctot Michael Mazur Mary Bagan McPherson James Morelli Wallace Ristow, Sr. Robin Montpetit Rodgers John Russell Judith Hajlo Schwartz	Class of 2046 James Asenbrenner Mark Collova Daniel Connors Joan Fehring Harrison Rebecca Hoffman Mark Lanctot Michael Mazur Mary Bagan McPherson James Morelli Wallace Ristow, Sr. Robin Montpetit Rodgers John Russell Judith Hajlo Schwartz	Class of 2047 James Asenbrenner Mark Collova Daniel Connors Joan Fehring Harrison Rebecca Hoffman Mark Lanctot Michael Mazur Mary Bagan McPherson James Morelli Wallace Ristow, Sr. Robin Montpetit Rodgers John Russell Judith Hajlo Schwartz	Class of 2048 James Asenbrenner Mark Collova Daniel Connors Joan Fehring Harrison Rebecca Hoffman Mark Lanctot Michael Mazur Mary Bagan McPherson James Morelli Wallace Ristow, Sr. Robin Montpetit Rodgers John Russell Judith Hajlo Schwartz	Class of 2049 James Asenbrenner Mark Collova Daniel Connors Joan Fehring Harrison Rebecca Hoffman Mark Lanctot Michael Mazur Mary Bagan McPherson James Morelli Wallace Ristow, Sr. Robin Montpetit Rodgers John Russell Judith Hajlo Schwartz	Class of 2050 James Asenbrenner Mark Collova Daniel Connors Joan Fehring Harrison Rebecca Hoffman Mark Lanctot Michael Mazur Mary Bagan McPherson James Morelli Wallace Ristow, Sr. Robin Montpetit Rodgers John Russell Judith Hajlo Schwartz	Class of 2051 James Asenbrenner Mark Collova Daniel Connors Joan Fehring Harrison Rebecca Hoffman Mark Lanctot Michael Mazur Mary Bagan McPherson James Morelli Wallace Ristow, Sr. Robin Montpetit Rodgers John Russell Judith Hajlo Schwartz	Class of 2052 James Asenbrenner Mark Collova Daniel Connors Joan Fehring Harrison Rebecca Hoffman Mark Lanctot Michael Mazur Mary Bagan McPherson James Morelli Wallace Ristow, Sr. Robin Montpetit Rodgers John Russell Judith Hajlo Schwartz	Class of 2053 James Asenbrenner Mark Collova Daniel Connors Joan Fehring Harrison Rebecca Hoffman Mark Lanctot Michael Mazur Mary Bagan McPherson James Morelli Wallace Ristow, Sr. Robin Montpetit Rodgers John Russell Judith Hajlo Schwartz	Class of 2054 James Asenbrenner Mark Collova Daniel Connors Joan Fehring Harrison Rebecca Hoffman Mark Lanctot Michael Mazur Mary Bagan McPherson James Morelli Wallace Ristow, Sr. Robin Montpetit Rodgers John Russell Judith Hajlo Schwartz	Class of 2055 James Asenbrenner Mark Collova Daniel Connors Joan Fehring Harrison Rebecca Hoffman Mark Lanctot Michael Mazur Mary Bagan McPherson James Morelli Wallace Ristow, Sr. Robin Montpetit Rodgers John Russell Judith Hajlo Schwartz	Class of 2056 James Asenbrenner Mark Collova Daniel Connors Joan Fehring Harrison Rebecca Hoffman Mark Lanctot Michael Mazur Mary Bagan McPherson James Morelli Wallace Ristow, Sr. Robin Montpetit Rodgers John Russell Judith Hajlo Schwartz	Class of 2057 James Asenbrenner Mark Collova Daniel Connors Joan Fehring Harrison Rebecca Hoffman Mark Lanctot Michael Mazur Mary Bagan McPherson James Morelli Wallace Ristow, Sr. Robin Montpetit Rodgers John Russell Judith Hajlo Schwartz	Class of 2058 James Asenbrenner Mark Collova Daniel Connors Joan Fehring Harrison Rebecca Hoffman Mark Lanctot Michael Mazur Mary Bagan McPherson James Morelli Wallace Ristow, Sr. Robin Montpetit Rodgers John Russell Judith Hajlo Schwartz	Class of 2059 James Asenbrenner Mark Collova Daniel Connors Joan Fehring Harrison Rebecca Hoffman Mark Lanctot Michael Mazur Mary Bagan McPherson James Morelli Wallace Ristow, Sr. Robin Montpetit Rodgers John Russell Judith Hajlo Schwartz	Class of 2060 James Asenbrenner Mark Collova Daniel Connors Joan Fehring Harrison Rebecca Hoffman Mark Lanctot Michael Mazur Mary Bagan McPherson James Morelli Wallace Ristow, Sr. Robin Montpetit Rodgers John Russell Judith Hajlo Schwartz	Class of 2061 James Asenbrenner Mark Collova Daniel Connors Joan Fehring Harrison Rebecca Hoffman Mark Lanctot Michael Mazur Mary Bagan McPherson James Morelli Wallace Ristow, Sr. Robin Montpetit Rodgers John Russell Judith Hajlo Schwartz	Class of 2062 James Asenbrenner Mark Collova Daniel Connors Joan Fehring Harrison Rebecca Hoffman Mark Lanctot Michael Mazur Mary Bagan McPherson James Morelli Wallace Ristow, Sr. Robin Montpetit Rodgers John Russell Judith Hajlo Schwartz	Class of 2063 James Asenbrenner Mark Collova Daniel Connors Joan Fehring Harrison Rebecca Hoffman Mark Lanctot Michael Mazur Mary Bagan McPherson James Morelli Wallace Ristow, Sr. Robin Montpetit Rodgers John Russell Judith Hajlo Schwartz	Class of 2064 James Asenbrenner Mark Collova Daniel Connors Joan Fehring Harrison Rebecca Hoffman Mark Lanctot Michael Mazur Mary Bagan McPherson James Morelli Wallace Ristow, Sr. Robin Montpetit Rodgers John Russell Judith Hajlo Schwartz	Class of 2065 James Asenbrenner Mark Collova Daniel Connors Joan Fehring Harrison Rebecca Hoffman Mark Lanctot Michael Mazur Mary Bagan McPherson James Morelli Wallace Ristow, Sr. Robin Montpetit Rodgers John Russell Judith Hajlo Schwartz	Class of 2066 James Asenbrenner Mark Collova Daniel Connors Joan Fehring Harrison Rebecca Hoffman Mark Lanctot Michael Mazur Mary Bagan McPherson James Morelli Wallace Ristow, Sr. Robin Montpetit Rodgers John Russell Judith Hajlo Schwartz	Class of 2067 James Asenbrenner Mark Collova Daniel Connors Joan Fehring Harrison Rebecca Hoffman Mark Lanctot Michael Mazur Mary Bagan McPherson James Morelli Wallace Ristow, Sr. Robin Montpetit Rodgers John Russell Judith Hajlo Schwartz	Class of 2068 James Asenbrenner Mark Collova Daniel Connors Joan Fehring Harrison Rebecca Hoffman Mark Lanctot Michael Mazur Mary Bagan McPherson James Morelli Wallace Ristow, Sr. Robin Montpetit Rodgers John Russell Judith Hajlo Schwartz	Class of 2069 James Asenbrenner Mark Collova Daniel Connors Joan Fehring Harrison Rebecca Hoffman Mark Lanctot Michael Mazur Mary Bagan McPherson James Morelli Wallace Ristow, Sr. Robin Montpetit Rodgers John Russell Judith Hajlo Schwartz	Class of 2070 James Asenbrenner Mark Collova Daniel Connors Joan Fehring Harrison Rebecca Hoffman Mark Lanctot Michael Mazur Mary Bagan McPherson James Morelli Wallace Ristow, Sr. Robin Montpetit Rodgers John Russell Judith Hajlo Schwartz	Class of 2071 James Asenbrenner Mark Collova Daniel Connors Joan Fehring Harrison Rebecca Hoffman Mark Lanctot Michael Mazur Mary Bagan McPherson James Morelli Wallace Ristow, Sr. Robin Montpetit Rodgers John Russell Judith Hajlo Schwartz	Class of 2072 James Asenbrenner Mark Collova Daniel Connors Joan Fehring Harrison Rebecca Hoffman Mark Lanctot Michael Mazur Mary Bagan McPherson James Morelli Wallace Ristow, Sr. Robin Montpetit Rodgers John Russell Judith Hajlo Schwartz	Class of 2073 James Asenbrenner Mark Collova Daniel Connors Joan Fehring Harrison Rebecca Hoffman Mark Lanctot Michael Mazur Mary Bagan McPherson James Morelli Wallace Ristow, Sr. Robin Montpetit Rodgers John Russell Judith Hajlo Schwartz	Class of 2074 James Asenbrenner Mark Collova Daniel Connors Joan Fehring Harrison Rebecca Hoffman Mark Lanctot Michael Mazur Mary Bagan McPherson James Morelli Wallace Ristow, Sr. Robin Montpetit Rodgers John Russell Judith Hajlo Schwartz	Class of 2075 James Asenbrenner Mark Collova Daniel Connors Joan Fehring Harrison Rebecca Hoffman Mark Lanctot Michael Mazur Mary Bagan McPherson James Morelli Wallace Ristow, Sr. Robin Montpetit Rodgers John Russell Judith Hajlo Schwartz	Class of 2076 James Asenbrenner Mark Collova Daniel Connors Joan Fehring Harrison Rebecca Hoffman Mark Lanctot Michael Mazur Mary Bagan McPherson James Morelli Wallace Ristow, Sr. Robin Montpetit Rodgers John Russell Judith Hajlo Schwartz	Class of 2077 James Asenbrenner Mark Collova Daniel Connors Joan Fehring Harrison Rebecca Hoffman Mark Lanctot Michael Mazur Mary Bagan McPherson James Morelli Wallace Ristow, Sr. Robin Montpetit Rodgers John Russell Judith Hajlo Schwartz	Class of 2078 James Asenbrenner Mark Collova Daniel Connors Joan Fehring Harrison Rebecca Hoffman Mark Lanctot Michael Mazur Mary Bagan McPherson James Morelli Wallace Ristow, Sr. Robin Montpetit Rodgers John Russell Judith Hajlo Schwartz	Class of 2079 James Asenbrenner Mark Collova Daniel Connors Joan Fehring Harrison Rebecca Hoffman Mark Lanctot Michael Mazur Mary Bagan McPherson James Morelli Wallace Ristow, Sr. Robin Montpetit Rodgers John Russell Judith Hajlo Schwartz	Class of 2080 James Asenbrenner Mark Collova Daniel Connors Joan Fehring Harrison Rebecca Hoffman Mark Lanctot Michael Mazur Mary Bagan McPherson James Morelli Wallace Ristow, Sr. Robin Montpetit Rodgers John Russell Judith Hajlo Schwartz	Class of 2081 James Asenbrenner Mark Collova Daniel Connors Joan Fehring Harrison Rebecca Hoffman Mark Lanctot Michael Mazur Mary Bagan McPherson James Morelli Wallace Ristow, Sr. Robin Montpetit Rodgers John Russell Judith Hajlo Schwartz	Class of 2082 James Asenbrenner Mark Collova Daniel Connors Joan Fehring Harrison Rebecca Hoffman Mark Lanctot Michael Mazur Mary Bagan McPherson James Morelli Wallace Ristow, Sr. Robin Montpetit Rodgers John Russell Judith Hajlo Schwartz	Class of 2083 James Asenbrenner Mark Collova Daniel Connors Joan Fehring Harrison Rebecca Hoffman Mark Lanctot Michael Mazur Mary Bagan McPherson James Morelli Wallace Ristow, Sr. Robin Montpetit Rodgers John Russell Judith Hajlo Schwartz	Class of 2084 James Asenbrenner Mark Collova Daniel Connors Joan Fehring Harrison Rebecca Hoffman Mark Lanctot Michael Mazur Mary Bagan McPherson James Morelli Wallace Ristow, Sr. Robin Montpetit Rodgers John Russell Judith Hajlo Schwartz	Class of 2085 James Asenbrenner Mark Collova Daniel Connors Joan Fehring Harrison Rebecca Hoffman Mark Lanctot Michael Mazur Mary Bagan McPherson James Morelli Wallace Ristow, Sr. Robin Montpetit Rodgers John Russell Judith Hajlo Schwartz	Class of 2086 James Asenbrenner Mark Collova Daniel Connors Joan Fehring Harrison Rebecca Hoffman Mark Lanctot Michael Mazur Mary Bagan McPherson James Morelli Wallace Ristow, Sr. Robin Montpetit Rodgers John Russell Judith Hajlo Schwartz	Class of 2087 James Asenbrenner Mark Collova Daniel Connors Joan Fehring Harrison Rebecca Hoffman Mark Lanctot Michael Mazur Mary Bagan McPherson James Morelli Wallace Ristow, Sr. Robin Montpetit Rodgers John Russell Judith Hajlo Schwartz	Class of 2088 James Asenbrenner Mark Collova Daniel Connors Joan Fehring Harrison Rebecca Hoffman Mark Lanctot Michael Mazur Mary Bagan McPherson James Morelli Wallace Ristow, Sr. Robin Montpetit Rodgers John Russell Judith Hajlo Schwartz	Class of 2089 James Asenbrenner Mark Collova Daniel Connors Joan Fehring Harrison Rebecca Hoffman Mark Lanctot Michael Mazur Mary Bagan McPherson James Morelli Wallace Ristow, Sr. Robin Montpetit Rodgers John Russell Judith Hajlo Schwartz	Class of 2090 James Asenbrenner Mark Collova Daniel Connors Joan Fehring Harrison Rebecca Hoffman Mark Lanctot Michael Mazur Mary Bagan McPherson James Morelli Wallace Ristow, Sr. Robin Montpetit Rodgers John Russell Judith Hajlo Schwartz	Class of 2091 James Asenbrenner Mark Collova Daniel Connors Joan Fehring Harrison Rebecca Hoffman Mark Lanctot Michael Mazur Mary Bagan McPherson James Morelli Wallace Ristow, Sr. Robin Montpetit Rodgers John Russell Judith Hajlo Schwartz	Class of 2092 James Asenbrenner Mark Collova Daniel Connors Joan Fehring Harrison Rebecca Hoffman Mark Lanctot Michael Mazur Mary Bagan McPherson James Morelli Wallace Ristow, Sr. Robin Montpetit Rodgers John Russell Judith Hajlo Schwartz	Class of 2093 James Asenbrenner Mark Collova Daniel Connors Joan Fehring Harrison Rebecca Hoffman Mark Lanctot Michael Mazur Mary Bagan McPherson James Morelli Wallace Ristow, Sr. Robin Montpetit Rodgers John Russell Judith Hajlo Schwartz	Class of 2094 James Asenbrenner Mark Collova Daniel Connors Joan Fehring Harrison Rebecca Hoffman Mark Lanctot Michael Mazur Mary Bagan McPherson James Morelli Wallace Ristow, Sr. Robin Montpetit Rodgers John Russell Judith Hajlo Schwartz	Class of 2095 James Asenbrenner Mark Collova Daniel Connors Joan Fehring Harrison Rebecca Hoffman Mark Lanctot Michael Mazur Mary Bagan McPherson James Morelli Wallace Ristow, Sr. Robin Montpetit Rodgers John Russell Judith Hajlo Schwartz	Class of 2096 James Asenbrenner Mark Collova Daniel Connors Joan Fehring Harrison Rebecca Hoffman Mark Lanctot Michael Mazur Mary Bagan McPherson James Morelli Wallace Ristow, Sr. Robin Montpetit Rodgers John Russell Judith Hajlo Schwartz	Class of 2097 James Asenbrenner Mark Collova Daniel Connors Joan Fehring Harrison Rebecca Hoffman Mark Lanctot Michael Mazur Mary Bagan McPherson James Morelli Wallace Ristow, Sr. Robin Montpetit Rodgers John Russell Judith Hajlo Schwartz	Class of 2098 James Asenbrenner Mark Collova Daniel Connors Joan Fehring Harrison Rebecca Hoffman Mark Lanctot Michael Mazur Mary Bagan McPherson James Morelli Wallace Ristow, Sr. Robin Montpetit Rodgers John Russell Judith Hajlo Schwartz	Class of 2099 James Asenbrenner Mark Collova Daniel Connors Joan Fehring Harrison Rebecca Hoffman Mark Lanctot Michael Mazur Mary Bagan McPherson James Morelli Wallace Ristow, Sr. Robin Montpetit Rodgers John Russell Judith Hajlo Schwartz	Class of 2100 James Asenbrenner Mark Collova Daniel Connors Joan Fehring Harrison Rebecca Hoffman Mark Lanctot Michael Mazur Mary Bagan McPherson James Morelli Wallace Ristow, Sr. Robin Montpetit Rodgers John Russell Judith Hajlo Schwartz	Class of 2101 James Asenbrenner Mark Collova Daniel Connors Joan Fehring Harrison Rebecca Hoffman Mark Lanctot Michael Mazur Mary Bagan McPherson James Morelli Wallace Ristow, Sr. Robin Montpetit Rodgers John Russell Judith Hajlo Schwartz	Class of 2102 James Asenbrenner Mark Collova Daniel Connors Joan Fehring Harrison Rebecca Hoffman Mark Lanctot Michael Mazur Mary Bagan McPherson James Morelli Wallace Ristow, Sr. Robin Montpetit Rodgers John Russell Judith Hajlo Schwartz	Class of 2103 James Asenbrenner Mark Collova Daniel Connors Joan Fehring Harrison Rebecca Hoffman Mark Lanctot Michael Mazur Mary Bagan McPherson James Morelli Wallace Ristow, Sr. Robin Montpetit Rodgers John Russell Judith Hajlo Schwartz	Class of 2104 James Asenbrenner Mark Collova Daniel Connors Joan Fehring Harrison Rebecca Hoffman Mark Lanctot Michael Mazur Mary Bagan McPherson James Morelli Wallace Ristow, Sr. Robin Montpetit Rodgers John Russell Judith Hajlo Schwartz	Class of 2105 James Asenbrenner Mark Collova Daniel Connors Joan Fehring Harrison Rebecca Hoffman Mark Lanctot Michael Mazur Mary Bagan McPherson James Morelli Wallace Ristow, Sr. Robin Montpetit Rodgers John Russell Judith Hajlo Schwartz	Class of 2106 James Asenbrenner Mark Collova Daniel Connors Joan Fehring Harrison Rebecca Hoffman Mark Lanctot Michael Mazur Mary Bagan McPherson James Morelli Wallace Ristow, Sr. Robin Montpetit Rodgers John Russell Judith Hajlo Schwartz	Class of 2107 James Asenbrenner Mark Collova Daniel Connors Joan Fehring Harrison Rebecca Hoffman Mark Lanctot Michael Mazur Mary Bagan McPherson James Morelli Wallace Ristow, Sr. Robin Montpetit Rodgers John Russell Judith Hajlo Schwartz	Class of 2108 James Asenbrenner Mark Collova Daniel Connors Joan Fehring Harrison Rebecca Hoffman Mark Lanctot Michael Mazur Mary Bagan McPherson James Morelli Wallace Ristow, Sr. Robin
---	--	----------------------------------	---	--	--	--	---	---	---	--	--	---	--	--	---	--	---	--	--	---	--	--	---	---	--	---	--	--	---	---	---	---	---	--	---	--	--	--	--	--	--	--	--	--	--	--	--	--	--	--	--	--	--	--	--	--	--	--	--	--	--	--	--	--	--	--	--	--	--	--	--	--	--	--	--	--	--	--	--	--	--	--	--	--	--	--	--	--	--	--	--	--	--	--	--	--	--	--	--	--	--	--	--	--	--	--	--	--	--	--	--	--	--	--	--	--	---



HILL-MURRAY BOARD OF TRUSTEES

Dan Hackman, *Chair*
Randy Newton, *Vice Chair*
Ann Heller, *Secretary*
Paul Angeli, *Treasurer*
George Berg
Jackie Berry
Fr. Michael Byron

Chandler Cayot
Jackie Garofalo
Joe Germ
Gerry Glomb
Daniel Khoury, MD
Kevin Lafeber
Katie Regan Nath

Ryan Bierwerth
Ken Powell
Daniel Rice
Stephanie Rustad
Laurie Savino
Br. Aelred Senna, OSB
Jim Hansen, President

Erin Herman,
Interim Principal
Denise Bates,
Director of Enrollment
Jacquie LaMonica,
Director of Finance
Chris Zupfer,
Vice President of Development

WELCOME, NEW MEMBERS!



Dan Mulvaney, '78

*President & CEO
Mulvaney & Associates*



Kim Faust

*Vice President & Treasurer
Fairview Health Services*



Rob Garofalo, '83

*Business Manager
Anderson Corporation*



Tim Bratland

*Vice President
Post Consumer Brands*



Carrie Maurer

*Sr. Vice President
Optum*



Tim Yocum, '92

*Chief Manager
MW Franchise Group, LLC*

Jessica and Sam Hickman
Joseph and Cindy Hinrichs
Jennifer A. Igo
Matt and Pam Jennings
Bianca Johnson
Ronald and Kirsten Johnson
William and Ruth Johnson
Jeffrey and Barbara Joynson
Jack and Jeanne Jungbauer
Mr. Walter Jungbauer
Bill and Connie Kelly
Laura Kelly & Anjie Cayot - Keyot
Scott and Ann Kennedy
Daniel and Rana Khoury
Jodi and Brad Klepac
Clyde and Gloria Klosner
Rick and Courtney Klosner
Mrs. Bonne Kluge
Joni (Dicker) and Jeff Knutson
James and Denise Koller
Todd and Patty Koran
Jeanine Schwietz Korf
Molly and Reggie Krakowski
Debra and Richard Kranz
Kathy and Bill Krause
Tom and Wendy Kreimer
Diane Kubal
Brian and Michelle Kueppers
Joseph and Liana Kvidera
Robb and Polly LaChappelle
Beth Lafeber
Kevin and Maureen Treacy Lahr
Mark and Irene Lambert
David and Ann Langer
Geoffrey and Stephanie Laramy
Barbara Larrive
Joe Lasnier & Denise Hun-ninghake
Mr. and Mrs. Larry Laughlin
Robert Lawrence III and Linda Radford Lawrence
Karen (Mackley) and Tony Leciejewski
Anne and Mark Lienemann
Mark and Tracy Lindemer,
Lindey's Prime Steak House
Erin and Tom Lisle
Mr. and Mrs. Mark Luger
Mr. and Mrs. Jeff Lynn
Mike and Mary Lynn
Len and JoAnne (Pierce)
Mackley
Bob and Pat Maietta
Angela and Michael Mattingly
Michael Mazur and Brigid M. O'Malley
Timothy McCarthy
Andrew and Jennifer (Kranz)
McCurdy
Mr. and Mrs. Thomas Mc-Donough
Kevin and Susan McElvain
Patrick and Kari McGrath
Kathryn and Scott Mensen
Catherine and James Miettunen
Bruce A. Miller
Mary M. Morelli

Patricia Morrow
Matt and Michele Mountain
Mr. and Mrs. Mike Mueller
Sean and Mary Anne Muniz
Andrew Nath and Katie Regan Nath
Kristen and Blake Nelson
Wally and Karen Nelson
Kristina and Steven Neubauer
Randal and Janell Newton
Kristen and Michael Nicklawke
John and Angela Nolde
Paul and Marie Oberle
Doreen O'Brien and Jeffrey Engel
Lisa and Jim O'Brien
Steve and Ann Ogren
Jennifer and Duane Passa
Michael and Kathleen Pearson
Patricia Clintman Peichel and Stephen Peichel
Rose and Bill Perpich
Kelly Peterson
Paul and Carolyn Petronack
Jack Petty and Karen Albertson
Mr. Christopher M. Phillips
Gary and Marcia Phillips
Gregory and Laurie Pickert
Michon and Tom Potter
Kenneth and Jane Powell
Rick Prokosch
Hal and Angela Propp
Casey and Bridget Regan
Donald B. and Jean A. Regan
Kelly Regan
Patrick O. & Mary K. Regan
Sean O. and Mary Dolan Regan
Paul and Kathryn Reifenberger
Christine and Dan Rice
Mr. and Mrs. Michael Rice
Bev Ricks
Jennifer and Kevin Roach
Andrew and Heather Rocheford
Shelley and Steve Roeske
Thomas and Kristin Rogers
Clint K. Rowles
Shannon and Chuck Runyon
Randahl and Angela Rust
Travis and Christa Rymal
Shannon Sandquist
Peter and Melissa Santrach
Gregory and Laurie Savino
John and Sharon Scanlon
Molly and Jake Schaffer
David and Cynthia Schwartz
Jeff and Joanne Schwartz
John and Patricia (Melandar)
Schwietz
Patrick and Pat Schwietz
Scott P. Schwietz
Mr. and Mrs. James A. Seifert
Mark Setterstrom
Steve and Yuan Severtson
Don and Mary Shipp
Pam Simanski
Matt Sklar and Kim Loria
Dan and Jen Sletten, DDS
Jay and Diana Smith

Companies, Foundations & Universities

A. Johnson & Sons Florist
Aarthun Enterprises Inc.
Acceleration North
Advanced Dermatology Care
Afton Alps
Audi Saint Paul
Bailey Nurseries, Inc.
Barnes and Noble
Basilica Events, LLC
Bayport BBQ
Belle Amie Spa
Big Steer Meats
Breadsmith
Briggs & Morgan P.A.
Burger Moe's
BWBR Architects
Chianti Grill
Clover Point Design
Colleen Davis Photography
College of Saint Benedict/St. John's University
College of St. Scholastica-Duluth
Community Ventures

Cossetta's
Crabtree's Garden Gate
Cravings Wine Bar & Grille
Cup And Cone
DeGidio's Restaurant and Bar
Metropolitan Endodontics
DeMori's Italian Food & Lounge
Domacin Restaurant/Winebar/
Wineshop
Don Julio's Mexican Restaurant
Donald's Inc.
Donatelli's
Dorothy Ann Bakery & Cafe
Downtown Car Wash
Downtown Woodfire Grill
Duc's Vietnamese & Chinese Cuisine
Duluth Coffee Company
Dunrovin Retreat Center
Eat@Banning & 5th/Eat@Home
Education Minnesota - Hill-Murray
Eileen's Colossal Cookies
Fabulous Fern's Bar and Grill
Faegre Baker Daniels LLP
Fannie Rose Candy Shop
Fun Sisters
Gabe's by the Park
Good Books
Goodin Co.
Gorman's Restaurant
Grand View Lodge
Guthrie Theater
Hagbergs Grocery
Half-Price Books
Hays Companies
Henseler Orthodontics
Hillcrest Golf Club
Hire a Host
Holiday Gas Station
Holiday Station
Indian Hills Golf Club
Jade Salon
Jethro's Enterprises, Inc.
Jimmy's Food and Drink
Joe Park Golf
Joe's Sporting Goods
Joseph's Grill
Key's Cafe
Keys Cafe & Bakery
Knitting From The Heart
Kowalski's
Kowalski's - White Bear
Kowalski's Market - Woodbury
Lake Elmo Inn
Lake Elmo Inn Event Center
Leo's Grill & Malt Shop
Lexus Of Maplewood
Lifecore Yoga
Lindamood-Bell Learning Processes
Loggers Golf
Lunds & Byerlys
Lunds & Byerlys - Woodbury
Luxury Nails
Mancini's Char House

Marco, Inc.
Marx
Matt Blair Photography
Medicine Chest
Meritage Restaurant
Metropolitan Endodontics
Mild to Wild Rafting and Jeep Trail Tours
Minnesota Historical Society
Minnesota Twins
Minnesota Vikings
Minnesota Wild
Minnesota Zoo
Modern Roots
Oakdale Hy-Vee
Obb's Sports Bar & Grill
Odyssey Development
O'Garra's Bar and Grill
Old Mexico
Olive Branch Oil & Spice Co
Olive Garden - Roseville
Olive's Fresh Pizza & Bar
On Your Marq by Marquess Studios
Ordway Center for the Perform-ing Arts
Original Coney Island Diner
Oxcart Ale House
Park Square Theatre
Parkway Barbers
Partners 4 Hope
Phil's Tara Hideaway
Pizza Luce - Saint Paul
Pony Express Car Wash
Primp - White Bear Lake
Princess Liquor 'n' Tobacco
Pub 112 Restaurant
R.C.Avionics, Inc.
Red Cow
Red Lantern Sushi
Reincarnations
Revive Salon
Roberto's on Grand
Rose Floral
Sak's Sports Bar
Salute Dental
Sarrack's Wine & Spirit
Science Museum of Minnesota
Select Vintage
Sgt Peppers
Shine Window
Smalley's Caribbean BBQ
Snuffy's Malt Shop

South Pier Inn
St. Paul Saints Baseball Club
Stella & Dot
Stillwater Boat Club
Suburban Floor Covering
Swirl Wine Bar
Taher Food Service (Hill-Murray Staff)
Tangled Salon & Spa
The Bierstube
The Bulldog
The Happy Gnome
The Little Oven
The Maids Of Greater St. Paul
The New Woodbury Cafe
The Nook - Shamrocks
The Oral Surgery Center
The Saint Paul Hotel
The Salon
The Tavern Grill
The Village Sports Bar
The Wilderness at Fortune Bay
Tiger Oak Media
Tinucci's Restaurant & Caterine
Tom Reid's Hockey City
Tradition Wealth Management
Trendi Salon
Tria Restaurant, Bar & Event Center
Tutor Doctor
Twin Cities Oral Surgery
Universal Athletic
University of Arkansas at Little Rock
University of Minnesota Duluth
University of Minnesota-Twin Cities
University of St. Thomas
Victorian's
Village Auto & Transmission
Vineyard Vines
Walt Disney World Co.
Warm Hands, Green Heart
Warm Rain
Warners' Stellan
Washington Square Bar & Grill
White Bear Country Inn & Rudy's Red Eye Grill
Wild River Outfitters
Wine Street Spirits
Winkit
Yoga Fit
Zerorez

Hill-Murray School Athletic Department

Denise Bates
Terri Beran
Dawn Blaney
Boys Varsity Hockey
Boys Varsity Soccer
Chuck Briscoe
Jean Busch
Business Office
English Department
Rebecca Fandrich
Football Program
Laurie Fritzingner
Girls Basketball
Girls Hockey Team
Girls Lacrosse
Girl's Swim and Dive
Tracy Gist
Aaron Goulet
Lindsay Hunkins
Shawn Illgen
Mary Johnston
Jr. Pioneers Hockey Team
Kari Keller
Jacquie LaMonica
Nancy Lynch
Anne McCulloch
Maureen McDonough
Nancy Perrault
Pioneer Dance Team
Kimberly Roe Nelson
Bill Schafhauser
School
Judy Hajlo Schwartz
Softball
Theatre Department
Track and Field Team
Varsity Baseball
World Language Department
Chris Zupfer

HILL-MURRAY FACULTY/STAFF DONORS

Julie Anderson
Kelley Barbato
Denise Bates
Teresa Beran
Donald Blake
Dawn Blaney
Chuck Briscoe
Jean Busch



GIVE
TO THE
MAX DAY

giveMN.org



NOVEMBER
17
2016

32 2015-2016 // ANNUAL REPORT

WWW.HILL-MURRAY.ORG 33



HILL-MURRAY FOUNDATION BOARD



Dan Hackman

*Chief Commercial Officer
kaleo*



Kevin Lafeber

*Vice President of Sales & Marketing
SunGard Public Sector*



Jim Wold, ‘64

*Special Assistant to President
Capella University*



Dan Rice

*Retired CEO
Strategic Fundraising, Inc.*



Lisa Cichy

*Attorney
Doar Drill & Skow*



Sr. Jacqueline Leiter, OSB, ‘88

*Sister
St. Paul’s Monastery*



Tony Yocum, ‘88

*Director
Mansfield Oil Company*



Ron Woessner

*Managing Partner
Global Financial Officer Practice*



Excellence in TEACHING

Kelly Schwartzbauer, English Teacher

For Kelly Schwartzbauer, teaching is a family affair. A daughter of two teachers and a sibling to four others, Schwartzbauer was destined to follow in her family’s footsteps. Growing up in White Bear Lake, her father taught English in North St. Paul for forty years, while her mother volunteered as an English teacher for immigrants and refugees.

Like her parents, Schwartzbauer also teaches English. She will be teaching 7th grade classes this fall, a challenge she’s accepting with open arms. “The academic excellence Hill-Murray is known for starts in middle school. Students from Hill-Murray are well prepared for college in all aspects. The staff works hard to prepare the whole student for their future.”

Schwartzbauer also spends time teaching reading enrichment courses in the Nicholas Center, a warm environment she describes as, “a fantastic resource for kids that need a little bit more time for re-teaching or specific skill-building.” To assist with students’ unique learning styles, Schwartzbauer tries to use a variety of teaching strategies and techniques.

“Every student can learn, but every student needs something different. I like to let the kids explore and be creative in their learning. Learning should be flexible, fun, and ever-changing. I’m passionate about exposing students to good literature and building habits of a lifelong reader. I believe that if a student can discover a love of reading, all subject areas will benefit.”

After one year at Hill-Murray, Schwartzbauer says there’s a lot to love. “There’s a sense of community and family among staff and students, and a freedom to try new things. Our students are incredibly respectful. They want to be here, and they want to do well. It makes teaching fun.”



JOIN IN THE CELEBRATION!

SEPTEMBER 13-18, 2016

For times & locations visit:
www.hill-murray.org

NON-PROFIT ORG.
U.S. POSTAGE
PAID
TWIN CITIES, MN
PERMIT NO. 1919

TUESDAY

Girls Tennis Ice Cream Social & Alumni Match

WEDNESDAY

Powderpuff Football game | Bonfire

THURSDAY

Volleyball Alumni BBQ | Soccer Alumni BBQ

FRIDAY

Mass with Archbishop Hebda, 9:05am

Cross Country Ceremonial Lap

Tailgating, 4:30pm | Food Trucks | Alumni Tent | Live Music

Homecoming Football Game, 7:00pm

SATURDAY

Swim & Dive Meet | Homecoming Formal

SUNDAY

Athletic Hall of Fame Induction

PIONEER HOMECOMING